

The Complete Guide of  
**Autosampler Vials, Caps & Inserts**



*Leaders in Separation & Purification Technologies*

**THE ONLY SOURCE OF RSA GLASS VIALS & INSERTS**

**INSIDE:**

New Items  
Basik Brand  
MicroSolv Brand  
AQ & RSA Brand  
Headspace  
96 Well RSA Plates  
Heavy Wall Reaction  
Sample Storage  
Accessories

## New products and new technologies that you may want to read about include:

- Partial slit **septa** for GC and Headspace analysis.
- Polyethylene, **single use** screw caps for LCMS, ultra pure.
- 9mm **magnetic screw caps** for use with Leap/CTC autosamplers.
- **MRQ™**, the ultimate autosampler vial for total recovery of your samples.
- **Softer snap caps** for ease of application in HPLC.
- **AQ™ brand** of autosampler vials & caps. Advanced Quality, for when it counts most.
- **RSA™ glass**. Vials without silanols. No adsorption, pH change or surface metals.
- **Storage vials** of highest quality for long term use.
- **96 well plates** with RSA glass inserts & inert mats.
- **Vial racks** made from acrylic for stability when filling vials.

Trademarks:  
Basik, MicroSolv, AQ, RSA  
are trademarks of  
MicroSolv Technology Corporation,  
Eatontown, NJ 07724, USA



MicroSolv has been designing and producing solutions for separation and purification technologies since its inception in 1992. Partnering with innovators at academic institutions and industry inventors we have introduced many ground breaking products that lead to superior methods and enhanced results for laboratories.

Since its founding, sample handling for chromatography has been one of MicroSolv's core competencies. We are continually involved in the development of new technologies and products for this market segment and offer customer service and technical support that is second to none.

All MicroSolv products with special emphasis on, chromatography auto-sampler vials, are state of the art. We continually strive to bring to market innovative and unique products to insure the utmost in proper analysis and reliability-especially when it counts most. We have many tiers of products to ensure laboratories of all sizes and budgets have choices and access to quality products.

I hope you enjoy reading this catalog and find technologies and products to help improve your laboratory to become more technologically advanced, efficient, cost effective and competitive.

Much Success!

Best Regards,  
Bill Ciccone  
President  
MicroSolv Technology Corporation

©2010 MicroSolv Technology Corporation • Eatontown, NJ 07724, USA

[www.MTC-USA.com](http://www.MTC-USA.com)

# BASIK™

## VIALS & CAPS

M I C R O S O L V



Basik™ Vials & Caps were developed to bring a simple autosampler vial line to the market that has exceptional value with emphasis on low cost without sacrificing quality standards that are required for confidence in batch to batch performance. The Basik™ brand of vials offers the following features;

- Low Cost/High Value
- Glass Specifications that meet or exceed minimum laboratory demands
- Vials that are produced using computerized cameras as they are tooled to assure perfect fit and form.
- Caps that do not "extract" under normal conditions and do not leak or jam your autosampler
- Quality Control of each and every batch to make sure you don't have a problem and have to investigate mysterious lost peaks, extra peaks or quantitation errors due to improper vials.

### Who should use Basik™ Vials & Caps?

- Anyone who is working in non critical volumes or concentrations in HPLC or GC and not working with biologicals, natural products or in LCMS.
- Anyone who has a budget concern for vials and caps but knows enough not to use "cheap" vials that are not made with QC SOP's.

Not all vials are created equal. The sample handling process is one of the most expensive in a separations lab and the final container you entrust it to before analysis is critical. In this "final container", you do not want or expect to find changes to your samples, diluent or other analytes due to vials or caps that are not made for sample handling, specifically chromatography.



## Basik™ Brand 8mm Screw Top Vials, Inserts & Caps

### SPECIFICATIONS:

<b>Glass Type:</b>	TYPE-1, N51A Expansion Borosilicate
<b>Screw Thread:</b>	8-425
<b>Dimensions:</b>	12x32mm, 8-425 Threads w/6.0mm Opening
<b>Insert:</b>	5.0mm OD
<b>Volume:</b>	2mL Nominal Volume

- High Quality
- Low Cost
- Reliable Performance

These vials and caps are used with some Beckman™, CTC™, Gilson™, Knauer™, Shimadzu™, Spark™, Varian™ and Hitachi™ autosamplers that require a narrow neck dimension.

Useful in GC or HPLC. Silanized vials and quantity discounts are available, please inquire or visit our website.

**9582S-0CV** 100/pack  
Vials, 8-425 thread, 2 mL  
clear glass



**2ML**

**9582S-0AV** 100/pack  
Vials, 8-425 thread, 2 mL  
amber glass.



**2ML**

**9582S-05-B** 100/pack  
**9582S-05-B-M** 1,000/case  
Caps, black for 8-425 thread vials.  
Fitted w/Silicone/PTFE septa  
for Varian™ and others.  
Polypropylene.



**9582S-WCV** 100/pack  
Vials, 8-425 thread, 2 mL  
clear glass with write on patch.



**2ML**

**9582S-WAV** 100/pack  
Vials, 8-425 thread, 2 mL  
amber glass with write on patch



**2ML**

**9582S-03-B** 100/pack  
**9582S-03-B-M** 1,000/case  
Caps, black, for 8-425 thread vials.  
Fitted **pre-slit** w/Silicone/PTFE  
septa for Shimadzu™ and others.  
Polypropylene.



**9582S-05N-K** 1,000/case  
Inserts, 5x31mm, flat bottom.  
clear glass, 200µL volume.  
10 packs of 100/case.



**200µL**

**9582S-02N** 100/pack  
Inserts, 5x29mm, conical bottom.  
clear glass w/attached plastic  
springs. 100µL volume.



**100µL**

**9582S-20C-K** 100/pack  
**9582S-20C-K-M** 1,000/case  
Caps for 8-425 thread vials.  
Fitted w PTFE/Silicone/PTFE  
septa in a black cap.  
Polypropylene.



**9582S-11-0CV** 100/pack  
Vials, Tear Drop  
w/8-425 screw top threads.  
Clear glass. 1.1mL volume



**1.1ML**

NOTES:



# Basik™ Brand

## 8mm Crimp Top Vials & Caps

- High Quality
- Great Value
- Crimp or Push On

### SPECIFICATIONS:

**Glass Type:** TYPE-1, N51A Expansion Borosilicate

**Crimp Top:** 8mm Serum Finish

These vials and caps are used with some Agilent™ Beckman™, CTC™, Perkin-Elmer™, Shimadzu™, Thermo™, Varian™ and VWR/Merck/Hitachi™ autosamplers that require an ND8 neck dimension. Use aluminum or plastic caps on these vials.

Useful in GC or HPLC. Silanized vials and quantity discounts are available please inquire or visit our website. Other sizes of vials and more caps are available, please inquire.

**9508C-FB07-CV** 1000/case  
Vials, crimp top, ND8, 8mm neck  
0.7ml, 40x7mm, clear, flat bottom.  
(10 packs of 100)



**700µL**

**9508C-FB07-AV** 1000/case  
Vials, crimp top, ND8, 8mm neck  
0.7ml, 40x7mm, amber, flat bottom.  
(10 packs of 100)



**700µL**

**9508C-FB08-CV** 100/pack  
Vials, crimp top, ND8, 8mm neck,  
0.8ml 30x8.2mm, clear, flat bottom.



**800µL**

**9508C-0RB** 1000/case  
Vials crimp top, ND8, 8mm neck,  
0.3ml 31.5 x 5.5mm round  
bottom, clear. (10 packs of 100)



**300µL**

**9508C-0CV** 1000/case  
Vials, crimp top, ND8, 8mm neck,  
0.3ml, 31.5 x 5.5mm conical  
bottom. (10 packs of 100 )



**300µL**

**9508C-10C-B** 100/pack  
Caps, push-on for ND8, 8mm  
crimp top vials. Inert blue  
polyethylene with thinned  
penetration point.



**9508C-10C-D** 100/pack  
Caps, push-on, for ND8, 8mm  
crimp top vials. White silicone  
rubber/ red PTFE. Clear  
polyethylene cap.



**9508C-10C-C** 100/pack  
Caps, push-on for ND8, 8mm  
crimp top vials. Natural  
rubber/PTFE. Clear  
polyethylene cap.



**9508C-10T-S** 100/pack  
Caps, crimp for ND8, 8mm  
crimp top vials. 4mm center hole,  
Sil/PTFE, 45 Shore A,  
1.3mm thick. Ultra Clean septa.  
Aluminum.



**9508C-30T-S** 100/pack  
Caps, crimp for ND8, 8mm  
crimp top vials. 4mm center hole  
Sil/PTFE with preslit. 45 shore A  
1.3mm thick septa.  
Aluminum.



**9508C-40T-S** 100/pack  
Caps, crimp for ND8, 8mm,  
crimp top vials. 4mm center hole w/  
natural rubber/TEF septa. "Agilent  
Quality". 60 Shore A 1.0mm thick.  
Aluminum.



**NOTES:**  
See page 46 for crimping tools.

# Basik™ Brand

## 9mm Screw Top Vials & Caps

**SPECIFICATIONS:**

**Glass Type:** TYPE-1, N51A Expansion Borosilicate  
**Screw Thread:** 9-425 Screw Top  
**Volume:** 2mL Nominal Volume

These vials and caps are used with most modern autosamplers including some Agilent™ Beckman™, HTA™, Perkin-Elmer™, Shimadzu™, Thermo™, Varian™ and Waters™ that require a 9mm short thread neck dimension. Can be used with most robotic autosamplers.

- **Save Money**
- **Basic Set of Vials and Caps**
- **Quantity Discounts Available**

Useful in GC or HPLC. Silanized vials and quantity discounts are available please inquire or visit our website. Other sizes of vials and more caps are available, please inquire.

**9502S-E-OCV** 100/pack  
Vials, 2 mL clear,  
9-425 screw top.

**2ML**

**9502S-E-WCV** 100/pack  
Vials, 2 mL write on, clear,  
9-425 screw top.

**2ML**

**9502S-E-OAV** 100/pack  
Vials, 2 mL amber,  
9-425 screw top.

**2ML**

**9502S-E-WAV** 100/pack  
Vials, 2 mL write on, amber,  
9-425 screw top.

**2ML**

**9502S-E-15B** 100/pack  
**9502S-E-15B-M** 1000/case  
Caps, w/ white silicone/natural  
PTFE septa fitted in the ribbed  
9-425 cap. Blue polypropylene

**2ML**

**9502S-E-15R** 100/pack  
**9502S-E-15R-M** 1000/case  
Caps, w/ white silicone/natural  
PTFE septa fitted in the ribbed  
9-425 cap. Red polypropylene.



**9502S-E-15G** 100/pack  
**9502S-E-15G-M** 1000/case  
Caps, w/ white silicone/natural  
PTFE septa fitted in the ribbed  
9-425 cap. Green polypropylene.



**9502S-E-15K** 100/pack  
**9502S-E-15K-M** 1000/case  
Caps, w/ white silicone/natural  
PTFE septa fitted in the ribbed  
9-425 cap. Black polypropylene.



**9502S-E-15Y** 100/pack  
**9502S-E-15Y-M** 1000/case  
Caps, w/ white silicone/natural  
PTFE septa fitted in the ribbed  
9-425 cap. Yellow polypropylene



**9502S-E-15P** 100/pack  
**9502S-E-15P-M** 1000/case  
Caps, w/ white silicone/natural  
PTFE septa fitted in the ribbed  
9-425 cap. Purple polypropylene.

**NOTES:**

# Basik™ Brand Snap Top Vials & Caps

- Wide Opening, Easy to Fill
- Great Value; Price/Performance
- Quantity Discounts Available

## SPECIFICATIONS:

**Glass Type:** TYPE-1, N51A Expansion Borosilicate  
**Dimensions:** 12x32mm, Wide Opening  
**Volume:** 2mL nominal volume

These vials are used with many Agilent™, Beckman™, CTC PAL™, Dionex™, Dynatech™, Jasco™, Perkin-Elmer™, Gilson™, Pharmacia™, Shimadzu™, Spectra Physics™, Thermo™ and Waters™ autosamplers. These are an excellent choice for budget

minded laboratories that want the speed and ease of Snap Top Vials.

Useful in HPLC. Silanized vials are available, please inquire or visit our website for information. Quantity discounts are available, please inquire.

**9502C-E-0AV** 100/pack  
Vials, 2 mL Amber, Snap Top



**2ML**

**9502C-E-WAV** 100/pack  
Vials, 2 mL write on, Amber Snap Top



**2ML**

**9502C-E-0CV** 100/pack  
Vials, 2 mL Clear, Snap Top



**2ML**

**9502C-E-WCV** 100/pack  
Vials, 2 mL write on, clear Snap Top



**2ML**

**9502C-E-15B** 100/pack  
**9502C-E-15B-M** 1000/case  
Cap, w/white Silicone/ natural PTFE septa fitted in the cap. Blue polyethylene.



**9502C-E-15Y** 100/pack  
**9502C-E-15Y-M** 1000/case  
Cap, w/white Silicone/ natural PTFE septa fitted in the cap. Yellow polyethylene.



**9502C-E-15G** 100/pack  
**9502C-E-15G-M** 1000/case  
Cap, w/white Silicone/ natural PTFE septa fitted in the cap. Green polyethylene.



**9502C-E-15R** 100/pack  
**9502C-E-15R-M** 1000/case  
Cap, w/white Silicone/ natural PTFE septa fitted in the cap. Red polyethylene.



**9502C-E-15K** 100/pack  
**9502C-E-15K-M** 1000/case  
Cap, w/white Silicone/ natural PTFE septa fitted in the cap. Black polyethylene.



## NOTES:

# Basik™ Brand

## 11mm Crimp Top Vials & Caps

**SPECIFICATIONS:**

<b>Glass Type:</b>	Type-1, N51A Expansion Borosilicate
<b>Dimensions:</b>	12x32mm, Wide opening
<b>Volume:</b>	2mL Nominal Volume
<b>Crimp Top:</b>	11mm Serum Finish

Basik™ Crimp Top autosampler vials are made of first hydrolytic, Type-1, N51A expansion, borosilicate glass. These vials are used with many Agilent, CTC PAL, Perkin-Elmer, Shimadzu, and Thermo autosamplers. An excellent choice for budget minded laboratories that want the security of aluminum crimp top vials.

- **Wide Opening, Easy to Fill**
- **Great Value: Price/Performance**
- **Silicone Rubber Seals: Lower Cost**

The silicone rubber crimp caps replaces the harder natural rubber septa. Not only will your needles last longer and you will save money but there are less extractables.

Useful in GC. Silanized vials and caps with different septa and colors are available, please inquire or visit our website for information.

**9502C-0-WAV** 100/pack  
Vials, 2 mL write on, Amber  
Crimp Top, Serum Finish.

**2ML**

**9502C-0-OCV** 100/pack  
Vials, 2 mL, Clear  
Crimp Top, Serum Finish.

**2ML**

**9502C-0-WCV** 100/pack  
Vials, 2 mL write on, Clear  
Crimp Top, Serum Finish.

**2ML**

**9502C-40T-S** 100/pack  
**9502C-40T-S-M** 1000/case  
Caps, w/ Red Silicone/TEF septa  
fitted in the cap. Silver aluminum.



**9502C-40T-D** 100/pack  
**9502C-40T-D-M** 1000/case  
Caps, w/ Red Silicone/TEF septa  
fitted in the cap. Gold aluminum.



**9502C-40T-G** 100/pack  
**9502C-40T-G-M** 1000/case  
Caps, w/ Red Silicone/TEF septa  
fitted in the cap. Green aluminum.



**9502C-40T-R** 100/pack  
**9502C-40T-R-M** 1000/case  
Caps, w/ Red Silicone/TEF septa  
fitted in the cap. Red aluminum.



**9502C-40T-B** 100/pack  
**9502C-40T-B-M** 1000/case  
Caps, w/ Red Silicone/TEF septa  
fitted in the cap. Blue aluminum.

**NOTES:**

See page 15 for inserts



# Basik™ Brand

## 10mm Screw Top Vials, Caps & Inserts

- Wide Opening, Easy to Fill
- Skirted Ridge for Plate Support
- Quantity Discounts Available

### SPECIFICATIONS:

**Glass Type:** TYPE-1, N51A Expansion Borosilicate  
**Dimensions:** 12x32mm, Wide Opening, 10-425 threads  
**Volume:** 2mL nominal volume

Basik™ 10mm screw top vials and inserts are made for HPLC autosamplers using first hydrolytic, TYPE-1, N51A expansion, borosilicate glass. These vials are used with many Agilent, CTC PAL, Perkin-Elmer, Shimadzu, and Thermo autosamplers.

Useful in HPLC & GC, silanized vials and inserts are available, please inquire or visit our website for information.

**9503S-E-WAV** 100/pack  
Vials, 2 mL write on, amber wide mouth.



**2ML**

**9503S-E-OCV** 100/pack  
Vials, 2 mL, clear wide mouth.



**2ML**

**9503S-E-WCV** 100/pack  
Vials, 2 mL write on, clear wide mouth



**2ML**

**9503S-10C-K** 100/pack  
**9503S-10C-K-M** 1000/case  
Cap, w/ Red Silicone/PTFE septa bonded in the cap. Black polypropylene.



**9503S-30C-K** 100/pack  
**9503S-30C-K-M** 1000/case  
Cap, w/ Red Silicone/PTFE septa Preslit bonded in the cap. Black polypropylene.



**9503S-GR** 100/pack  
**9503S-GR-M** 1000/case  
Cap, w/ Red Silicone/PTFE septa fitted in the cap. Black skirted ridge, polypropylene.



### NOTES:

Can't find what you want?  
Contact customer service at  
1-732-578-1777 or email us  
at [customers@mtc-usa.com](mailto:customers@mtc-usa.com)

## Basik™ Brand 13mm Screw Top Vials, Caps & Inserts

### SPECIFICATIONS:

**Glass Type:** TYPE-1, N51A Expansion Borosilicate  
**Screw Thread:** 13-425  
**Dimensions:** 45x14.7mm  
**Volume:** 3.8ml (4ml nominal volume)

- Wide Opening, Easy to Fill
- Quantity Discounts are Available
- Plastic Springs Attached to Inserts

Basik™ 13-425mm screw top vials and inserts are made for HPLC autosamplers from first hydrolytic, Type-1, N51A expansion, borosilicate glass. These vials are used with some Shimadzu, Spark,

Varian and Waters WISP autosamplers.

Useful in HPLC. Quantity discounts, silanized vials & inserts are available, please inquire.

**9504S-WAV** 100/pack  
Vials, 4ml write on, amber.



**4ML**

**9504S-0CV** 100/pack  
Vials, 4ml, clear.



**4ML**

**9504S-WCV** 100/pack  
Vials, 4ml write on, clear.



**4ML**

**9504S-0AV** 100/pack  
Vials, 4ml, amber.



**4ML**

**9504S-05C-BLK** 100/pack  
**9504S-05C-BLK-M** 1000/case  
Cap, w/ Red Silicone/PTFE septa fitted in the cap. Black polypropylene.



**9504S-10C-BK** 100/pack  
**9504S-10C-BK-M** 1000/case  
Cap, w/ Red Silicone/PTFE septa bonded in the cap. Black polypropylene.



**9504S-05S-W** 100/pack  
Cap, w/ Silicone/PTFE liner fitted in the cap. White polypropylene.



**9504S-03N** 100/pack  
Inserts, high precision borosilicate glass 700µl, 8x40mm with attached springs.



**700µL**

**9504S-04N** 100/pack  
Inserts, high precision borosilicate glass 300µl, 6x38mm with attached springs.



**300µL**

**9504S-10C-W** 100/pack  
Cap, w/ Silicone/PTFE liner fitted in the cap. White polypropylene.



**NOTES:**

# Basik™ Brand Shell Vials w/ Push Caps

- Wide Opening, Easy to Fill
- For Budget Minded Labs

## SPECIFICATIONS:

**Glass Type:** TYPE-1, N51A Expansion Borosilicate  
**Crimp Top:** 32mm, Wide Opening, 10-425 threads

Basik™ shell vials with push on polyethylene caps are made for HPLC autosamplers from first hydrolytic, Type-1, N51A expansion, borosilicate glass. These vials are used with many Alcott, Gilson, Shimadzu and Waters autosamplers. A good choice for budget minded laboratories. Caps and Vials sold separately by request,

please inquire.

Useful in HPLC. Quantity discounts are available, please inquire.

*Care should be taken when applying the caps. Avoid using any vials that might have cracks or may be broken before use.*

**95002-0CP-A** 100/pack  
Vials & Caps, 1ml, clear  
7.8x35mm, for Alcott autosamplers.



**1ML**

**95001-ASV-EPP** 100/pack  
Vials & Caps, 1ml, amber  
40x8.26mm, for Waters & Shimadzu autosamplers.



**1ML**

See page 25 for other 1mL vials

**95001-CSV-EPP** 100/pack  
Vials & Caps, 1ml, clear  
40x8.26mm, for Waters & Shimadzu autosamplers.

See page 25 for other 1mL vials



**1ML**

**9502C-ASV-EPP** 100/pack  
Vials & Caps, 2ml, amber  
31.5x11.6mm.



**2ML**

**9502C-CSV-EPP** 100/pack  
Vials & Caps, 2ml, clear  
31.5x11.6mm.



**2ML**

**9504C-ASV-EPP** 100/pack  
Vials & Caps, 4ml, amber  
44.6x14.65mm, for Waters WISP autosamplers.



**4ML**

**9504C-CSV-EPP** 100/pack  
Vials & Caps, 4ml, clear  
44.6x14.65mm for Waters WISP autosamplers.



**4ML**

**NOTES:**



# M I C R O S O L V AUTOSAMPLER V I A L S & C A P S



MicroSolv Brand™ vials & caps were developed for the separations laboratory that works with impurities, quantitation values and stability testing. The demanding requirements led to these vials and caps made with pharmaceutical packaging grade glass and caps and septa that work together to provide the best performance from most commercial autosamplers on the market.

Most popular features of MicroSolv brand vials, inserts and caps:

- Good cost/value
- Glass & plastic specifications that meet or exceed demanding laboratory requirements and have minimal impact on sensitive samples.
- Vials that are produced using computerized cameras as they are tooled to assure perfect fit and form.
- Caps that do not extract under normal conditions and do not leak or jam your autosampler.
- Highest quality inserts available for limited volume applications in both economical and mandrel point.
- Available in "Easy Purchase Packs"; one catalog number for matching vials and caps in one package.



### Who should use MicroSolv™ brand vials, inserts & caps?

- Anyone who is working with demanding requirements for concentration and purity in HPLC or GC and not working with biologicals, natural products or in GCMS.

Not all vials are created equal. The sample handling process is one of the most expensive in a separations lab and the final container you entrust it to before analysis is critical. In this "final container", you do not want or expect to find changes to your samples, diluent or other analytes due to vials or caps that are not made for sample handling, specifically chromatography.



# MicroSolv Brand

## 9mm Screw Top Vials and Caps – Easy Purchase Packs

- Easy To Purchase
- Easy To Manage Inventory
- Compatible with Leading Instruments

### SPECIFICATIONS:

**Glass Type:** First Hydrolytic, Pharmaceutical Grade Borosilicate. N51A Expansion.

**Screw Thread:** 9-425

**Dimensions:** 12x32mm, 9mm Threads: 7.0mm Opening

These are our most popular autosampler vials and caps. Easy to manage inventory as 100 caps and 100 vials are packaged together in one box. One catalog number to purchase knowing that these vials and caps are designed to work together.

Useful in HPLC and GC, these kits are compatible with most Agilent™, Beckman™, CTC™, Gilson™, Shimadzu™, Thermo™, Varian™ & Waters™ autosamplers including Alliance™ & Acquity™

**9502S-1CP** 100/pack  
Easy Purchase Pack 2ml clear glass vials & blue screw caps w/ silicone/PTFE, bonded septa.



**9502S-1WCP** 100/pack  
Easy Purchase Pack 2ml clear glass vials w/write on patch & blue screw caps w/ silicone/PTFE bonded septa.



**9502S-1WAP** 100/pack  
Easy Purchase Pack 2ml amber glass vials w/write on patch & blue screw caps w/ silicone/PTFE bonded septa.



**9502S-3CP** 100/pack  
Easy Purchase Pack 2ml clear glass vials & blue screw caps w/ silicone/PTFE, **pre-slit** bonded septa



**9502S-3WCP** 100/pack  
Easy Purchase Pack 2ml clear glass vials w/write on patch & blue screw caps w/silicone/PTFE **pre-slit** bonded septa



**9502S-3WAP** 100/pack  
Easy Purchase Pack 2ml amber glass vials w/write on patch & blue screw caps w/silicone/PTFE **pre-slit** bonded septa



### NOTES:



**Easy Purchase Pack Box**  
Includes 100 Vials & Caps



## MicroSolv Brand 9mm Screw Top Vials – 12x32mm

### SPECIFICATIONS:

**Glass Type:** First Hydrolytic, Pharmaceutical Grade Borosilicate. N51A Expansion.  
**Screw Thread:** 9-425. 9mm  
**Dimensions:** 12x32mm, 6.5mm Opening  
**Plastic Type:** Virgin, Medical Grade Polypropylene

- **Pharmaceutical Quality**
- **Save Money**
- **Compatible with All Leading Instruments**

These vials are the most commonly used autosampler vials for HPLC or GC today. They are made from the same grade of glass that is used to package pharmaceuticals and not what is commonly used

for autosampling. Strict control is followed for dimensional accuracy as well as hygienic conditions and a final QC inspection is enforced before shipping.

**9502S-OCV** 100/pack  
Vials 9-425 thread, 2 mL clear glass.



**2ML**

**9502S-WCV** 100/pack  
Vials 9-425 thread, 2 mL clear glass w/write on patch.

**MOST POPULAR**



**2ML**

**9502S-WAV** 100/pack  
Vials 9-425 thread, 2 mL amber glass w/write on patch.



**2ML**

**9502S-PP-Clear** 100/pack  
Vials 9-425 thread, 2 mL transparent polypropylene. Filling lines.



**2ML**

**9502S-PP-Amber** 100/pack  
Vials 9-425 thread, 2 mL amber polypropylene. Filling lines.



**2ML**

**9572S-MS** 100/pack  
Vials 9-425 thread, 700µl translucent ultra virgin PP. Compatible w/most LCMS applications.



**700UL**

**9512S-OCV** 100/pack  
Vials 9-425 thread, clear glass. 1.5ml, center draining Maximum Recovery.



**1.5ML**

**9512S-0AV** 100/pack  
Vials 9-425 thread, amber glass. 1.5ml, center draining Maximum Recovery.



**1.5ML**

**9512S-OCV-T** 100/pack  
Vials 9-425 thread, clear glass. 1.2ml, MRQ-Maximum Recovery.



**1.2ML**

### NOTES:

100 vials pack. Caps sold separately.  
See Page 13 (right) for proper screw caps.  
See page 14 for limited volume vials.

# MicroSolv Brand

## 9mm Screw Caps – 12x32mm

- Designed for Sealing
- Short Threads for Convenience
- Compatible with All Leading Instruments

These screw caps are manufactured specifically for MicroSolv brand chromatography vials and therefore must pass our stringent QC inspections to assure best quality. The septa undergoes many QC

### SPECIFICATIONS:

**Plastic Type:** Virgin, Polypropylene

**Screw Thread:** 9-425, 9mm

tests and is never touched by human hands which could contaminate your sample.

**9502S-05-B** 100/pack  
**9502S-05-B-M** 1000/case  
 Caps 9-425 thread, blue with Silicone/PTFE septa fitted in the cap.



**9502S-10C-B** 100/pack  
**9502S-10C-B-M** 1000/case  
 Caps 9-425 thread, blue with Silicone/PTFE septa bonded to the cap.

**MOST POPULAR**



**9502S-30C-B** 100/pack  
**9502S-30C-B-M** 1000/case  
 Caps 9-425 thread, blue with **pre-slit** Silicone/PTFE septa bonded to the cap.

Use with Waters Alliance & others.



**9502S-20C-B** 100/pack  
**9502S-20C-B-M** 1000/case  
 Caps 9-425 thread, blue with PTFE/Silicone/PTFE septa fitted in the cap.



**9502S-06-LCC** 100/pack  
 Screw Cap LC-Clean, clear silicone /TEF septa bonded for 9-425 vials. QC Certified.



**9502S-07-LCC** 100/pack  
 Screw Cap LC-Clean, clear, **pre-slit** silicone /TEF septa bonded for 9-425 vials. QC Certified.



**9502S-09-SR** 100/pack  
**9502S-09-SR-K** 1000/case  
 Screw Cap w/closed top, 9-425 thread blue, polypropylene with a red-orange Rubber/TEF transparent liner fitted in the cap. 60 shore A, 1.0mm thick.



**9502S-09-PE** 100/pack  
 Screw Cap for 9-425 thread glass or plastic vials. Made with Mass Spec compatible polyethylene.

Single injection. No Septa Required.



**95040-40-T-D** 100/pack  
 Screw Cap 9-425, PP blue with center hole fitted with assembled magnetic cover, gold color. Sil/PTFE white/red ultra clean septa.



**9502S-34C-B** 100/pack  
**9502S-34C-B-M** 1000/case  
 Screw Cap with partial **precut** (Y) silicone/PTFE septa fitted in the cap, 9-425 thread.



### NOTES:

Other septa and colors are available, please inquire.

## MicroSolv Brand 9mm Screw Top Vials – Limited Volume Sampling

### SPECIFICATIONS:

**Plastic Type:** Virgin & Ultra Virgin, Polypropylene, TPX  
Polymethylpentene  
**Dimensions:** 12x32mm

These vials are commonly used for HPLC or GC today because they are made from the same grade of materials that are commonly used for pharmaceutical packaging. Strict control is followed for dimensional accuracy as well as hygienic conditions and a final QC

- When Samples are Precious
- Save Money from Competitors
- Compatible with All Leading Instruments

inspection is enforced before shipping.

See page 24 for other limited volume vials

**9532S-0PV** 100/pack  
**9532S-0PV-K** 1000/case  
Vials, 9-425 screw thread, 300µl  
translucent polypropylene, good  
for biological compounds.



**300µL**

**9532S-0XV** 100/pack  
**9532S-0XV-K** 1000/case  
Vials, 9-425 screw thread, 300µl  
Clear TPX plastic, good  
for biological compounds.



**300µL**

**9532S-MS** 100/pack  
**9532S-MS-K** 1000/case  
Vials, 9-425 screw thread, 300µl  
translucent ultra virgin PP.



*Compatible with most LCMS  
applications.*

**300µL**

**9532S-TS-C** 100/pack  
Vials, 9-425 screw thread  
clear, TPX, polymethylpentene  
plastic. A clear glass 200µl  
conical insert cemented into the  
vial.



**200µL**

**9532S-TS-A** 100/pack  
Vials, 9-425 screw thread,  
amber TPX, polymethylpentene  
plastic. A clear glass 200µl  
conical insert cemented into the  
vial.



**200µL**

### NOTES:

Caps sold separately.  
See Page 13 for proper screw caps.  
See page 20 for limited volume inserts

Looking for glass inserts?  
See page 20



# MicroSolv Brand

## 9mm Screw Top Vials – Limited Volume Sampling

- When Samples are Precious
- Save Money from Competitors
- Compatible with All Leading Instruments

These limited volume inserts are commonly used for HPLC or GC today because they are made from the same grade of glass and plastic that is commonly used for pharmaceutical packaging. Strict control is followed for dimensional accuracy as well as hygienic

### SPECIFICATIONS:

**Glass Type:** TYPE-33, Borosilicate  
**Plastic Type:** Ultra Virgin, Polypropylene  
**Use with Vials:** 12x32mm, 9-425 (9mm)  
 Screw Thread or Snap Top

conditions and a final QC inspection is enforced before shipping. Precision point inserts are made with an actual mandrel while conical points are made by pull point.

**9502S-02N** 100/pack  
 Inserts, 6x29mm, precision point glass, w/attached plastic springs, 200µl usable & 300µl total volume.

**BEST IN CLASS.**

**200µL**



**9502S-02PP** 100/pack  
 Inserts, 6x29mm, ultra virgin polypropylene w/attached plastic springs and graduations. 300µl volume.

LCMS and bio compatible

**300µL**



**9502S-02CP** 100/pack  
**9502S-02CP-K** 1000/case  
 Inserts, 6x29mm, economical conical point, glass w/attached plastic springs, 300µl volume.

Compare to Polyspring Inserts™

**300µL**



**9502S-01N** 100/pack  
 Inserts, 6x28mm, precision point glass, w/attached plastic springs. 150µl usable volume.

**150µL**



**9502S-02E** 100/pack  
 Inserts, 6x28mm, w/attached plastic springs. Glass, 100µl volume.

**100µL**



**9502S-03N** 100/pack  
 Inserts, 6x31mm, self aligning glass conical point 250µl volume.

**250µL**



**9502S-04N** 100/pack  
 Insert, 6x30mm, self aligning, precision point. Glass, 300µl volume.

**300µL**



**9502S-05N** 100/pack  
**9502S-05N-K** 1000/case  
 Inserts, 6x31mm, flat bottom. Glass, 350µl volume.

**350µL**



### NOTES:

See page 6, 12 and 17 for compatible vials.

## MicroSolv Brand Snap Crimp Top Vials and Caps – Easy Purchase Packs

### SPECIFICATIONS:

<b>Glass Type:</b>	First Hydrolytic, Pharmaceutical Grade Borosilicate. N51A Expansion.
<b>Finish:</b>	Snap Ring
<b>Dimensions:</b>	12x32mm 6.0mm Opening

These kits are a **very popular** way to purchase autosampler vials and caps. Easy to manage inventory since 100 caps and 100 vials are packaged together in one box with only one catalog number to use to order them. Be confident in performance knowing that these vials and caps are designed to work together.

- Easy To Purchase
- Easy To Manage Inventory
- Compatible with Leading Instruments

Useful in HPLC, these kits are compatible with most Agilent™, Beckman™, CTC™, Gilson™, Shimadzu™, Thermo™, Varian™ & Waters™ autosamplers.

*Each package includes 100 caps and 100 vials.*

**9502C-1CP** 100/pack  
Easy Purchase Pack 2ml clear glass vials & blue snap caps w/ silicone/PTFE septa.



**9502C-1WCP** 100/pack  
Easy Purchase Pack 2ml clear glass vials w/write on patch & blue snap caps w/ silicone/PTFE septa.



**9502C-1WAP** 100/pack  
Easy Purchase Pack 2ml amber glass vials w/write on patch & blue screw caps w/ silicone/PTFE septa



**9502C-3CP** 100/pack  
Easy Purchase Pack 2ml clear glass vials & blue snap caps w/ silicone/PTFE, pre-slit septa



**9502C-3WCP** 100/pack  
Easy Purchase Pack 2ml clear glass vials w/write on patch & blue snap caps w/silicone/PTFE pre-slit septa



**9502C-3WAP** 100/pack  
Easy Purchase Pack 2ml amber glass vials w/write on patch & blue snap caps w/silicone/PTFE pre-slit septa



### NOTES:



**Easy Purchase Pack Box**  
Includes 100 Vials & Caps



# MicroSolv Brand

## Snap Top Vials – 12x32mm

- High Quality Snap Tops
- Save Money from Competitors
- Compatible with All Leading Instruments

These vials are commonly used for HPLC or GC today because they are made from the same grade of glass that is commonly used for pharmaceutical packaging. Strict control is followed for dimensional accuracy as well as hygienic conditions and a final QC inspection is

### SPECIFICATIONS:

**Glass Type:** First Hydrolytic, Borosilicate. N51A Expansion.  
**Dimensions:** 12x32mm, 11mm Snap/Crimp Top  
**Plastic Types:** Virgin & Ultra Virgin, Polypropylene TPX, Polymethylpentene

enforced before shipping. Small volume vials are excellent choices when you are sample limited.

*QTY Discounts are available, please inquire*

**9502C-OCV** 100/pack  
Vials Snap Top 2 mL, clear glass.  
6mm opening.



**2ML**

**9502C-WCV** 100/pack  
Vials Snap Top 2 mL clear glass  
w/write on patch. 6mm opening



**2ML**

**9502C-WAV** 100/pack  
Vials Snap Top 2 mL amber glass  
w/write on patch. 6mm opening.



**2ML**

**9572C-MS** 100/pack  
Vials, Snap Top, 700µl  
translucent ultra virgin PP.



**700µL**

**9532C-OPV** 100/pack  
**9532C-OPV-K** 1000/case  
Vials, Snap Top, 300µl  
translucent polypropylene, good  
for biological compounds.



**300µL**

**9532C-0XV** 100/pack  
**9532C-0XV-K** 1000/case  
Vials, Snap Top, 300µl  
clear TPX plastic, good  
for biological compounds.



**300µL**

**9532C-MS** 100/pack  
**9532C-MS-K** 1000/case  
Vials, Snap Top 300µl  
translucent ultra virgin PP.



**300µL**

**9532C-TS-C** 100/pack  
Vials, Snap Top Clear, TPX,  
polymethylpentene plastic.  
A clear glass 200µl conical  
insert cemented into the vial.



**200µL**

**9532C-TS-A** 100/pack  
Vials, Snap Top, amber TPX,  
polymethylpentene plastic. A  
clear glass 200µl conical insert  
cemented into the vial.



**200µL**

### NOTES:

See Page 18 & 19 for proper Snap Caps.

# MicroSolv Brand

## Snap Caps

### SPECIFICATIONS:

**Caps:** Polyethylene  
**Septa:** Silicone/PTFE (White/Red)  
 Silicone/Tefzel (clear)

- Easy To Apply, Time Saving
- Excellent Choice for HPLC
- Compatible with Leading Instruments

Snap Caps and Snap/Crimp top vials are designed to work together by stretching the polypropylene cap over the vial to provide sufficient cantilever and downward forces to keep the septa snug on the vial. You should avoid using vials and caps that are not designed for each other and where the lugs of the caps do not match the vials

to prevent evaporation or leakage.

Useful in HPLC, these kits are compatible with most Agilent™, Beckman™, CTC™, Gilson™, Shimadzu™, Thermo™, Varian™ & Waters™ autosamplers.

**9502C-10CB** 100/pack  
**9502C-10CB-M** 1000/case  
 Snap Cap, blue, w/Silicone rubber /PTFE septa.



**MOST POPULAR**

**9502C-20CB** 100/pack  
**9502C-20CB-M** 1000/case  
 Snap Cap, blue, w/PTFE/Silicone/PTFE septa.



**9502C-30CB** 100/pack  
**9502C-30CB-M** 1000/case  
 Snap Cap, blue w/preslit Silicone rubber/PTFE septa.



**9502C-10CN** 100/pack  
**9502C-10CN-M** 1000/case  
 Snap Cap, natural color, w/Silicone/PTFE septa.



**9502C-06-LCC** 100/pack  
 Snap Cap, blue, LC-Clean™ clear w/Silicone rubber/TEF septa QC Certified.



**9502C-07-LCC** 100/pack  
 Snap Cap, natural, LC-Clean™ w/clear Silicone rubber/TEF septa. QC Certified.



**9502C-10CR** 100/pack  
**9502C-10CR-M** 1000/case  
 Snap Cap, red, w/Silicone rubber /PTFE septa.



**9502C-10CY** 100/pack  
**9502C-10CY-M** 1000/case  
 Snap Cap, yellow, w/Silicone rubber /PTFE septa.



**9502C-10CG** 100/pack  
**9502C-10CG-M** 1000/case  
 Snap Cap, green, w/Silicone rubber /PTFE septa.



**9502C-10CK** 100/pack  
**9502C-10CK-M** 1000/case  
 Snap Cap, black w/Silicone rubber /PTFE septa.



### NOTES:

# MicroSolv Brand

## Snap Caps and Crimp Caps

- Softer Caps for Easier Application
- Excellent Choice for HPLC
- Preslit Septa Available

### SPECIFICATIONS:

<b>Caps:</b>	Polyethylene/Aluminium
<b>Septa:</b>	Silicone/PTFE (White/Red)
	Silicone/Tefzel (clear)
	Synthetic Red Rubber/Tefzel

Snap Caps and Snap/Crimp top vials are designed to work together by stretching the polypropylene cap over the vial to provide sufficient cantilever and downward forces to keep the septa snug on the vial. You should avoid using vials and caps that are not designed for each other and where the lugs of the caps do not match the vials

to prevent evaporation or leakage.

Useful in HPLC, these kits are compatible with most Agilent™, Beckman™, CTC™, Gilson™, Shimadzu™, Thermo™, Varian™ & Waters™ autosamplers.

**9502C-50CB** 100/pack  
**9502C-50CB-M** 1000/case  
 Snap Cap, blue with PTFE septa.



**9502C-40T-S** 100/pack  
**9502C-40T-S-M** 1000/case  
 Crimp Cap, silver with PTFE/Red Silicone rubber septa. Aluminum. Crimp tool required.

Also useable with serum finish vials.



**9502C-41S** 100/pack  
**9502C-41S-M** 1000/case  
 Crimp Cap w/White Silicone Rubber/Red PTFE 0.05" thick (Ultra Low Bleed) septa. Aluminum. Crimp tool required.

Also useable with serum finish vials



**9502C-S08-T** 100/pack  
**9502C-S08-T-M** 1000/case  
 Snap Cap soft, with 1.0mm thick Butyl Rubber/TEF septa.



**9502C-S10-T** 100/pack  
**9502C-S10-T-M** 1000/case  
 Snap Cap soft, with 1.3mm thick Silicone/PTFE septa.



**9502C-S80-T** 100/pack  
**9502C-S80-T-M** 1000/case  
 Snap Cap soft, with 1.0mm thick Rubber/PTFE (red/beige) septa.



**9502C-S20-T** 100/pack  
**9502C-S20-T-M** 1000/case  
 Snap Cap soft, with 1.0mm thick PTFE/Silicone/PTFE R/W/R septa.



**9502C-S34-T** 100/pack  
**9502C-S34-T-M** 1000/case  
 Snap Cap soft, with 1.0mm thick partial pre slit (Y) Silicone/PTFE.



**9502C-S30-T** 100/pack  
**9502C-S30-T-M** 1000/case  
 Snap Cap soft, with 1.0mm thick pre slit (X) Silicone/PTFE (White/Blue) septa.



### NOTES:

## MicroSolv Brand Inserts for Snap Caps – Limited Volume Sampling

### SPECIFICATIONS:

**Glass Type:** TYPE-33, Borosilicate  
**Plastic Type:** Ultra Virgin, Polypropylene  
**Use with Vials:** 12x32mm, 9-425 (9mm)  
 Screw Thread or Snap Top, 11mm

These limited volume inserts are commonly used for HPLC or GC today because they are made from the same grade of glass that is commonly used for pharmaceutical packaging. Strict control is followed for dimensional accuracy as well as hygienic conditions

- When Samples are Precious
- Save Money from Competitors
- Compatible with All Leading Instruments

and a final QC inspection is enforced before shipping. Precision point inserts are made with an actual mandrel while conical points are made by pull point.

See Page 12 & 17 for compatible vials.

**9502S-02N** 100/pack  
 Inserts, 6x29mm, precision point,  
 glass w/attached plastic springs,  
 200µl usable & 300µl total volume.

**BEST IN CLASS.**

**200µL**



**9502S-02PP** 100/pack  
 Inserts, 6x29mm, ultra virgin  
 polypropylene w/attached plastic  
 springs and graduations.  
 300µl volume.

LCMS and bio compatible

**300µL**



**9502S-02CP** 100/pack  
**9502S-02CP-K** 1000/case  
 Inserts, 6x29mm, economical  
 conical point, glass w/attached  
 plastic springs, 300µl volume.

Compare to Polyspring Inserts™

**300µL**



**9502S-01N** 100/pack  
 Inserts, 6x28mm, precision point  
 glass, w/attached plastic springs.  
 150µl usable volume.

**150µL**



**9502S-02E** 100/pack  
 Inserts, 6x28mm, w/attached  
 plastic springs. Glass, 100µl volume

**100µL**



**9502S-03N** 100/pack  
 Inserts, 6x31mm, self aligning.  
 Glass conical point 250µl volume.

**250µL**



**9502S-04N** 100/pack  
 Insert, 6x30mm, self aligning,  
 precision point. Glass, 300µl  
 volume.

**300µL**



**9502S-05N** 100/pack  
**9502S-05N-K** 1000/case  
 Inserts, 6x31mm, flat bottom.  
 Glass, 350µl volume.

**350µL**



NOTES:

Looking to deactivate  
 your inserts?  
 See page 47



# AQ™ Brand



Advanced Quality brand or AQ™ brand vials, inserts & caps were developed for the quality control or research laboratory that works with demanding requirements for accurate and precise results. These vials and caps are very high quality glass with perfect fit and form assurance so that they will perform properly and not adulterate your data. AQ™ vials are manufactured in near clean room facilities and are not touched by human hands, then packaged in special shrink wrap containers for no particulate or extractable contamination that can occur in some leading competitive brands.

Reduced Surface Activity glass, RSA™ is a new patent pending way of making autosampler vials that does not create the normal thin layer of silica on the surface of glass vials. This results in a silanol free surface that does not adsorb bases, hydrolyze sensitive samples or change the pH of your diluents while it sits in your vials over night, without any coating or deactivation process. If samples are hydrophobic and stick to almost anything and silanization is required, RSA glass vials offer the very best silanized/deactivated glass possible with near 100% deactivation. Look for the RSA logo.

Use RSA glass vials and inserts for the best possible results.

## Most Popular Features of RSA™ vials, inserts and AQR™ caps:

- Excellent cost/value.
- Specifications that exceed demanding laboratory requirements and have virtually no impact on sensitive samples for best RSD possible.
- Vials that are produced using computerized cameras as they are tooled to assure perfect fit and form in a near clean room environment and not touched by human hands.
- Caps that do not extract under LCMS or GCMS conditions and do not leak or jam your autosampler.
- Highest quality inserts available for limited volume applications in both economical and precision mandrel point in RSA glass.
- Available in "Easy Purchase Packs"; one catalog number for matching vials and caps in one package.

### Who should use AQ™ brand vials, inserts & caps?

Anyone who is working with very high requirements for accuracy concentration and purity in LC or GC or working with biologicals, natural products, LCMS, GCMS or Ion Chromatography.

Not all vials are created equal. The sample handling process is one of the most expensive in a separations lab and the final container you entrust before analysis is critical. In this "final container", you do not want or expect to find changes to your samples, diluent or other analytes due to vials or caps especially in chromatography.



## AQ™ Brand

### 9mm Screw Top Vials and Caps – Easy Purchase Packs

#### SPECIFICATIONS:

**Glass Type:** Low Ion Content, Borosilicate  
33 Expansion, TYPE 1, Class A  
**Screw Thread:** 9-425  
**Dimensions:** 12x32mm, 9mm Threads: 7.0mm Opening

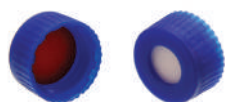
Advanced Quality™ vials and caps are “Mass Spec Compatible” and are a result of years of development. The vials are made from highest quality glass stock available and each vial is inspected automatically by a computer controlled camera for the tightest tolerances in the industry for fit, form and cleanliness.

- **Easy To Purchase & Manage Inventory**
- **Compare to LCMS Certified Competitors**
- **Untouched by Human Hands**

Useful in LCMS and GCMS, these vials & caps are compatible with most Agilent™, Beckman™, CTC™, Gilson™, Shimadzu™, Thermo™, Varian™ & Waters™ autosamplers including Alliance™ & Acuity™.

#### 9509S-1WCP-AQ 100/pack

Easy Purchase Pack 2ml clear glass vials w/write on patch & blue screw caps w/ silicone/PTFE bonded septa. Clear tray pack.



#### 9509S-3WCP-AQ 100/pack

Easy Purchase Pack 2ml clear glass vials w/write on patch & blue screw caps w/silicone/PTFE pre-slit bonded septa. Clear tray pack.



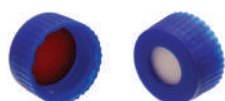
#### 9509S-9WCP-AQ 100/pack

Easy Purchase Pack 2ml clear glass vials w/write on patch & clear polyethylene ultra pure cap. Clear tray pack.



#### 9509S-1WAP-AQ 100/pack

Easy Purchase Pack 2ml amber glass vials w/write on patch & blue screw caps w/ silicone/PTFE bonded septa. Clear tray pack.



#### 9509S-3WAP-AQ 100/pack

Easy Purchase Pack 2ml amber glass vials w/write on patch & blue screw caps w/silicone/PTFE pre-slit bonded septa. Clear tray pack.



#### 9509S-9WAP-AQ 100/pack

Easy Purchase Pack 2ml amber glass vials w/write on patch & clear polyethylene ultra pure cap. Clear tray pack.



#### NOTES:

#### EASY TO MANAGE INVENTORY

100 caps and 100 vials are packaged together in one box. One catalog number to purchase knowing that the vials and caps are designed to work together.



## 9mm Screw Top Vials and Caps – Easy Purchase Packs

- Easy To Purchase & Manage Inventory
- Limited Volume Vials
- Untouched by Human Hands

## SPECIFICATIONS:

**Glass Type:** Low Ion Content, Borosilicate  
33 Expansion, TYPE 1, Class A

**Screw Thread:** 9-425/9-426

**Dimensions:** 12x32mm, 9mm Threads: 7.0mm Opening

Advanced Quality™ vials and caps are “Mass Spec Compatible” and are a result of years of development. The vials are made from highest quality glass stock available and each vial is inspected automatically by a computer controlled camera for the tightest tolerances in the industry for fit, form and cleanliness.

These limited volume vials & caps are compatible with most Agilent™, Beckman™, CTC™, Gilson™, Shimadzu™, Thermo™, Varian™ & Waters™ autosamplers including Alliance™ & Acquity™.

**9512S-1CP-T** 100/pack  
Easy Purchase Pack 1.2ml clear glass MRQ™ vials & blue screw caps w/ silicone/PTFE bonded septa. Clear tray pack.



**9512S-3CP-T** 100/pack  
Easy Purchase Pack 1.2ml clear glass MRQ™ vials & blue screw caps w/ **pre-slit** silicone/PTFE bonded septa. Clear tray pack.



**9512S-9CP-T** 100/pack  
Easy Purchase Pack 1.2ml clear glass MRQ™ vials & clear single injection polyethylene ultra pure cap. Clear tray pack.



**9532S-1CP** 100/pack  
Easy Purchase Pack Clear write on glass vials w/ 300µL fused insert & blue screw caps w/ silicone/PTFE bonded septa. Clear tray pack.



**9532S-3CP** 100/pack  
Easy Purchase Pack Clear write on glass vials w/ 300µL fused insert & blue screw caps w/ **pre-slit** silicone/PTFE bonded septa. Clear tray pack.



**9532S-9CP** 100/pack  
Easy Purchase Pack Clear write on glass vials w/ 300µL fused insert & clear single injection polyethylene ultra pure cap. Clear tray pack.



## NOTES:

**EASY TO MANAGE INVENTORY**

100 caps and 100 vials are packaged together in one box. One catalog number to purchase knowing that the vials and caps are designed to work together.



## AQ™ Brand 9mm Screw Top Vials & AQR™ Screw Caps

### SPECIFICATIONS:

**Glass Type:** Low Ion Content, Borosilicate.  
33 Expansion, TYPE 1, Class A  
**Screw Thread:** 9-425  
**Dimensions:** 12x32mm, 9mm

- Low Ion Content
- Compare to LCMS Certified
- Highest Quality Caps Available

Advanced Quality™ vials are “Mass Spec Compatible” and are a result of years of development. The vials are made from highest quality glass stock available and each vial is inspected automatically by a computer controlled camera for the tightest tolerances in the industry for fit, form and cleanliness.

These limited volume vials are compatible with most Agilent™, Beckman™, CTC™, Gilson™, Shimadzu™, Thermo™, Varian™ & Waters™ autosamplers including Alliance™ & Acquity™.

**9509S-WCV-AQ** 100/pack  
2ml clear glass vials with  
write-on patch. Clear pack.



**2ML**

**9509S-WAV-AQ** 100/pack  
2ml amber glass vials with  
write-on patch. Clear pack.



**2ML**

**9512S-OCV-T** 100/pack  
1.2ml clear MRQ™ glass vials,  
Clear pack.



**1.2ML**

**9532S-OCV** 100/pack  
Clear glass vials with fused  
300µl borosilicate insert.  
Clear pack.



**300µL**

**9532S-OAV** 100/pack  
Amber glass vials with fused  
300µl borosilicate insert (clear).  
Clear pack.



**300µL**

**9512S-OAV** 100/pack  
1.8ml amber glass vials  
with center drain for  
Maximum Recovery.  
Clear pack.



**1.8ML**

**9512S-OCV** 100/pack  
1.8ml clear glass vials  
with center drain for  
Maximum Recovery.  
Clear pack



**1.8ML**

**9509S-10C-B** 100/pack  
**9509S-10C-B-M** 1000/case  
Caps AQR™ 9-425 thread, light  
blue with ultra clean fitted  
silicone/PTFE septa.



**9509S-30C-B** 100/pack  
**9509S-30C-B-M** 1000/case  
Caps AQR™ 9-425 thread, light  
blue with ultra clean **pre-slit**  
Fitted silicone/PTFE septa.



**9502S-09-PE** 100/pack  
**9502S-09-PE-K** 1000/case  
Caps 9-425 thread, transparent  
ultra clean polyethylene, single  
injection septa. No Septa Required.  
Low Cost.



**NOTES:**  
See page 15 for inserts

# AQ<sup>TM</sup> Brand

## 1ml, 96 Position Vials & Caps

- **Highest Quality Caps Available**
- **Compare to "OEM"**
- **Designed for HPLC**

**SPECIFICATIONS:**

<b>Glass Type:</b>	Low Ion Content, Borosilicate 33 Expansion, TyPE-1, Class A
<b>Cap:</b>	Polyethylene blend designed for Waters 96 Position Autosamplers

Advanced Quality<sup>TM</sup> 96 Position vials and caps are designed specifically for the Waters 96 position autosamplers so their performance is assured. Will not clog, bend or break your needles as competitors can do. Vials and caps are packaged in AQ<sup>TM</sup> quality clear kit packs for convenience but also for their quality.

**95001-0CP** 250/pack  
Easy Purchase Pack, 1ml  
8x 40mm, clear glass  
shell vials with polyethylene  
cap with penetration point for  
Waters 96 position autosamplers.



**95001-0AP** 250/pack  
Easy Purchase Pack, 1ml  
8x 40mm, amber glass  
shell vials with polyethylene  
cap with penetration point for  
Waters 96 position autosamplers.



**95001-02N** 100/pack  
Inserts for 1ml 8x 40mm,  
shell vials. 200ul, 5x36mm  
with attached springs.

**NOTES:**

See page 9 for other shell vials and caps.

See page 29 for  
RSA<sup>TM</sup> Glass vials for  
ultimate performance!

## AQ™ Brand Snap/Crimp Top Vials

### SPECIFICATIONS:

**Glass Type:** Borosilicate, 33 Expansion, TYPE 1, Class A  
**Snap Top:** 11mm crimp or snap caps  
**Dimensions:** 12x32mm, 7.0mm Opening

- **Easy to Use**
- **Compare to LCMS Certified**

Advanced Quality™ vials are made from highest quality glass stock available and each vial is inspected automatically by a computer controlled camera for the tightest tolerances in the industry for fit, form and cleanliness.

Useful in HPLC, these vials caps are compatible with most Agilent™, Beckman™, CTC™, Gilson™, Shimadzu™, Thermo™, Varian™ & Waters™ autosamplers including Alliance™ & Acquity™.

**9509C-WCV-AQ** 100/pack  
 Vials, 2ml Snap/Crimp Top clear, with write on patch in clear packaging.



**2ML**

**9509C-WAV-AQ** 100/pack  
 Vials, 2ml Snap/Crimp Top amber, with write on patch in clear packaging.



**2ML**

**9532C-0CV** 100/pack  
 Vials, Snap/Crimp Top clear, with write on patch & 300µl fused insert in clear packaging.



**300µL**

**9532C-WAV** 100/pack  
 Vials, Snap/Crimp Top amber, with write on patch & clear 300µl fused insert in clear packaging.



**300µL**

**9512C-0CV-T** 100/pack  
 Vials, Snap/Crimp Top clear, MRQ™ 1.2ml in clear packaging.



**1.2ML**

**9512C-0CV** 100/pack  
 Vials, Snap/Crimp Top clear, Max Recovery™ 1.8ml with center drain in clear packaging.



**1.8ML**

### NOTES:

See pages 18 & 19 for compatible caps  
 See page 47 for silanizing and deactivation



# MicroSolv Brand Snap Caps

- Easy To Apply, Time Saving
- Excellent Choice for HPLC
- Compatible with AQ™ Vials

**SPECIFICATIONS:**

**Caps:** Polyethylene  
**Septa:** Silicone/PTFE (White/Red)  
 Silicone/Tefzel (clear)

These snap caps are designed to be 100% compatible with AQ™ brand snap top vials and are the highest quality caps available.

Other colors and septa are available, please inquire.

Compatible with most Agilent™, Beckman™, CTC™, Gilson™, Shimadzu™, Thermo™, Varian™ & Waters™ autosamplers including Alliance™ & Acquity™.

**9502C-10CB** 100/pack  
**9502C-10CB-M** 1000/case  
 Snap Cap, blue, w/Silicone rubber /PTFE septa.



**9502C-30CB** 100/pack  
**9502C-30CB-M** 1000/case  
 Snap Cap, blue w/preslit Silicone rubber/PTFE septa.



**9502C-06-LCC** 100/pack  
 Snap Cap, blue, LC-Clean™ clear w/clear silicone rubber/TEF septa QC Certified.



**9502C-07-LCC** 100/pack  
 Snap Cap, natural, LC-Clean™ w/clear silicone rubber/TEF septa. QC Certified.


**NOTES:**

See pages 18 & 19 for more Snap Caps for AQ™ Vials

We have colored snap caps.  
 See pages 5, 18 & 19





## Is your data at risk due to the reactivity of your autosampler vials?

- Detect low abundance analytes normally adsorbed by glass
- Prevents pH changes in vials before injection even hours later
- Prevents sample hydrolysis that can occur in your vials
- No meniscus when water is used as the main solvent
- Not Coated

Advanced Quality (AQ™) vials and inserts manufactured with RSA Glass™ have reduced surface activity due to the elimination of the layer of silica that results when vials are normally manufactured and many of the surface metals that contaminate analysis and have detrimental effects on your results..

When using ordinary borosilicate glass autosampler vials and inserts, sample diluents (such as water) can de-protonate the many hydroxyl groups on the wall of your vial which produces a negative charge on the glass. The “acidic” functionality of these silanols has been known to cause adsorption of basic compounds, change the pH of the sample solution and/or hydrolyze some susceptible compounds making them undetectable. The surface metal contaminants can cause precipitation, chelation or other changes in your samples while in the vial.

With RSA Glass™ vials and inserts there is virtually no “loss to the vial” and there is no “pH shifting” or other problems thus making your analysis more reliable, lot to lot, run to run and day to day.

***RSA™ autosampler vials and glass inserts*** are manufactured without using any coating of any type making them an excellent choice for GC and GCMS compared to coated vials.

## Compare RSA™ Vials to your vials.

The table below illustrates the power and usefulness of RSA Glass for chromatography autosampler vials. The data colored green in the chart below shows how typical glass vials on the market today will adsorb certain compounds and when in low abundance, will greatly skew your data compared to vials with RSA Glass.

**Methodology Synopsis:** a test solution was placed in 3 vials (N1, N2 & N3) from each of the brands listed below with a concentration of 5ug/ml. After four hours in the vials, the final concentration in each vial and the change in concentration due to adsorption to the vial was quantified by HPLC. The final concentration results were reported as N1, N2 & N3 and average (AVG) for each vial brand. The percent loss was calculated and reported (% Loss). Notice the difference between RSA Glass vials and the next closest competitor to see the difference and benefits of RSA Glass.

In a second illustration, shown below, of the usefulness of RSA Glass vials, data highlighted in red shows that leading vials on the market today may change the pH of your sample diluent due to the surface chemistry.

**Methodology Synopsis:** DI water was placed in the same brands of vials as above and pH data points were taken at the start and during a 4 hour period. The data shown in red are the ending pH readings; Note that the starting pH of the DI water was 5.45. This simple test and other more extensive tests have shown that vials made with RSA Glass do not cause any changes in sample pH even after 4 hours in the vials, but that others including market leaders, can cause changes by more than 1.25 pH units.



### Adsorption & pH Change Comparison To Market Leaders

	N1	N2	N3	AVG	% LOSS	pH
Starting Points	287.8	287.0	286.1	287	0.00	5.45
RSA Glass	283.5	287.2	287.21	286	0.35	5.50
MicroSolv Brand	234.9	235.2	239.1	236	17.62	6.15
Basik Vials	157.7	158.7	159.9	159	44.64	6.0
Brand F	114.3	223.2	57.3	132	54.14	6.65
Brand N	168.8	149.9	146.5	155	45.96	6.94

Green = Sample Adsorption Test

Red = pH Change Test

**STARTING POINTS:** Adsorption Test; 5ug/ml Chlorhexidene in water; pH Test; DI Water pH 5.45.

**RSA™ GLASS VIALS:** Reduced Surface Activity Glass Vials.

**MICROSOLV™ BRAND VIALS:** our leading line of autosampler vials and inserts on the market today. Made with pharmaceutical grade glass.

**BASIK™ BRAND VIALS:** our popular brand of economy autosampler vials for when quality issues are mostly limited to fit and form.

**BRAND "F":** a leading brand of autosampler vials that is resold by many laboratory supply dealers.

**BRAND "N"** is the leading brand of autosampler vials that is sold through dealers and private labeled by some of the largest instrument companies.

## AQ™ Brand with RSA™ Glass



## 9mm Screw Top Vials and Caps – Easy Purchase Packs

### SPECIFICATIONS:

**Glass Type:** Reduced Surface Activity – RSA™  
Borosilicate. Class A  
**Screw Thread:** 9-425  
**Dimensions:** 12x32mm, 9mm Neck.

- **Easy To Purchase & Manage Inventory**
- **Reduced Surface Activity for Better Results**
- **Untouched by Human Hands**

Advanced Quality™ brand vials made with RSA™ glass and AQR™ screw caps are superior to “Mass Spec Certified” vials offered by competitors since this glass contains no silanols or surface contaminants and virtually no sample interaction with the glass walls. This produces more reliable and more accurate results.

Excellent choice in both LCMS and GCMS, these vials & caps are compatible with most Agilent™, Beckman™, CTC™, Gilson™, Shimadzu™, Thermo™, Varian™ & Waters™ autosamplers including Alliance™ & Acquity™. All items shown below are shipped in ultra clean, clear tray packs.

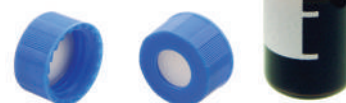
**9509S-1WCP-RS** 100/pack  
Easy Purchase Pack 2ml clear glass vials w/ RSA™ Glass and write on patch & light blue AQR™ screw caps w/ silicone/PTFE fitted ultra pure septa.



**9509S-3WCP-RS** 100/pack  
Easy Purchase Pack 2ml clear glass vials w/ RSA™ Glass and write on patch & light blue AQR™ screw caps w/ silicone/PTFE pre-slit fitted septa.



**9509S-1WAP-RS** 100/pack  
Easy Purchase Pack 2ml amber glass vials w/ RSA™ Glass and write on patch & light blue AQR™ screw caps w/ silicone/PTFE fitted ultra pure septa.



**9509S-3WAP-RS** 100/pack  
Easy Purchase Pack 2ml amber glass vials w/ RSA™ Glass and write on patch & light blue AQR™ screw caps w/ silicone/PTFE pre-slit fitted septa.



**9512S-1MP-RS** 100/pack  
Easy Purchase Pack 1.2ml clear glass MRQ™ vials with RSA™ glass & light light blue AQR™ screw caps w/ silicone/PTFE fitted ultra pure septa.



**9512S-3MP-RS** 100/pack  
Easy Purchase Pack 1.2ml clear glass MRQ™ vials with RSA™ glass & light blue AQR™ screw caps w/ silicone/PTFE pre-slit fitted ultra pure septa.



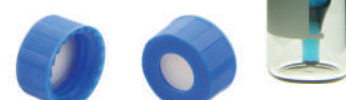
**9512S-1CP-RS** 100/pack  
Easy Purchase Pack 1.8ml clear glass Max Recovery™ vials with RSA™ glass & light blue AQR™ screw caps w/ silicone/PTFE fitted ultra pure septa.



**9512S-3CP-RS** 100/pack  
Easy Purchase Pack 1.8ml clear glass Max Recovery™ vials with RSA™ glass & light blue AQR™ screw caps w/ silicone/PTFE pre-slit fitted ultra pure septa.



**9532S-1CP-RS** 100/pack  
Easy Purchase Pack clear vials with 300µL fused inserts made with RSA™ glass & light blue AQR™ screw caps w/ silicone/PTFE fitted ultra pure septa.



**9532S-3CP-RS** 100/pack  
Easy Purchase Pack clear vials with 300µL fused inserts made with RSA™ glass & light blue AQR™ screw caps w/ pre-slit silicone/PTFE fitted ultra pure septa.



**Easy Purchase Pack Box**  
Includes 100 Vials & Caps

### NOTES:

See page 47 for silanizing and deactivating vials.



# AQ™ Brand with RSA™ Glass

## 9mm Screw Top Vials & Insert

- **RSA for Better Results**
- **Perfect for Bases, Biologicals & Natural Products**

### SPECIFICATIONS:

**Glass Type:** Reduced Surface Activity – RSA™  
TYPE 1, Class A

**Screw Thread:** 9-425

**Dimensions:** 12x32mm, 9mm

Advanced Quality™ brand vials made with RSA™ glass contains no silanols or surface contaminants and virtually no sample interaction with the glass walls. This produces more reliable and more accurate results.

Excellent choice in both LCMS and GCMS, these vials are compatible with most Agilent™, Beckman™, CTC™, Gilson™, Shimadzu™, Thermo™, Varian™ & Waters™ autosamplers including Alliance™ & Acquity™. All items shown below are shipped in ultra clean, clear packs.

**9509S-WCV-RS** 100/pack  
2ml clear glass vials made with RSA™ glass and with write-on patch. Clear pack.



**2ML**

**9509S-WAV-RS** 100/pack  
2ml amber glass vials made with RSA™ glass and with write-on patch. Clear pack.



**2ML**

**9512S-OCV-T-RS** 100/pack  
1.2ml clear MRQ glass vials made with RSA™ glass. Clear pack.



**1.2ML**

**9532S-OCV-RS** 100/pack  
Clear glass vials with fused 300µL borosilicate insert made with RSA™ glass. Clear pack.



**300µL**

**9512S-OCV-RS** 100/pack  
1.8ml clear glass vials made with RSA™ glass with center drain for Maximum Recovery. Clear pack



**1.8ML**

**9502S-02N-RS** 100/pack  
Inserts, 200µl usable and 300µl total volume made with RSA glass with attached plastic springs. Precision bottom for best results available today.



**200µL**

Use with  
12x32mm  
screw top or  
snap top vials.

### NOTES:

See pages 13 & 24 for screw caps

See page 47 for silanizing and deactivation process



## AQ™ Brand with RSA™ Glass Snap Top Vials & Insert



### SPECIFICATIONS:

<b>Glass Type:</b>	Reduced Surface Activity – RSA™ TYPE 1, Class A
<b>Snap/Crimp:</b>	11mm Snap-ring Serum Finish
<b>Dimensions:</b>	12x32mm

Advanced Quality™ brand vials made with RSA™ glass contains no silanols or surface contaminants and virtually no sample interaction with the glass walls. This produces more reliable and more accurate results.

- Use Snap Caps or Crimp Caps
- RSA for Better Results
- Perfect for Bases, Biologicals & Natural Products

Excellent choice in HPLC and LCMS, these vials are compatible with most Agilent™, Beckman™, CTC™, Gilson™, Shimadzu™, Thermo™, Varian™ & Waters™ autosamplers including Alliance™ & Acquity™. All items shown below are shipped in ultra clean, clear packs.

**9512C-0CV-T-RS** 100/pack  
1.2ml clear MRQ glass vials made with RSA™ glass. Clear pack.



**1.2ML**

**9532C-0CV-RS** 100/pack  
Clear write-on glass vials with fused 300µl borosilicate insert made with RSA™ glass. Clear pack.



**300µL**

**9512C-0CV-RS** 100/pack  
1.8ml clear glass vials made with RSA™ glass with center drain for Maximum Recovery. Clear pack



**1.8ML**

**9502S-02N-RS** 100/pack  
Inserts, 200µL usable and 300µl total volume made with RSA glass with attached plastic springs. Precision bottom for best results available today.



**200µL**

### NOTES:

See pages 27, 18 & 19 for compatible snap caps  
See page 47 for silanizing and deactivated vials

RSA Glass is great!  
You can even deactivate them.  
See page 47.



# HEADSPACE

## M I C R O S O L V

In the analysis of volatile compounds analytes are injected from the headspace of vials onto columns by autosamplers designed for this purpose. These analytes are driven into the headspace by heating them or by their own volatility. The headspace is under pressure and the precision of injection from run to run is highly dependent on the vial and cap used. For reproducible results it is very important that the vial has a flat top surface so that it allows the cap to form a tight enough seal to hold the increase and variable pressure under heated conditions.

MicroSolv brand headspace vials and caps are made to exact and critical specifications with the above in mind. Also, the cleanliness of the vial, cap and the packaging they are supplied in can be very important. Not all headspace vials are created equal.

*Headspace is commonly used in cosmetics, forensic science, food science, beverage manufacturing and environmental studies. Recently the US FDA and other international regulatory agencies have required the analysis of residual solvents in drug product including excipients. USP Chapter <467> describes an approach using headspace testing.*

### Two Types of Headspace Vials Qualify for Approved Headspace Analysis

- **Screw Top Vials & Caps** – Depending on the Autosampler you have, this new system is very convenient and works well.
- **Crimp Top Vials & Caps** – Five different finish styles are available in this traditional system which has been used for many years.

### Many Different Combinations of Septa and Caps Approved for Headspace Analysis

On pages 38 & 39, many different types of high purity septa and crimp caps are available for different uses in headspace analysis.



# MicroSolv Brand

## 18mm Screw Top Headspace Vials

### SPECIFICATIONS:

**Glass Type:** 1st Hydrolytic class, TYPE 1  
**Screw Thread:** 18mm Precision Screw Thread

- **Convenient. Reliable Results**
- **Form Monitored by Computer**
- **Eliminate Crimping in Headspace Analysis**

MicroSolv precision screw thread headspace autosampler vials are designed for use in CTC GC PAL, Agilent, Gerstel, Shimadzu, Thermo TriPlus and Perkin-Elmer Turbomax instruments for headspace analysis. The fit and form of headspace vials are especially important to provide precise and accurate results.

These vials are made for headspace analysis and computerized, inline cameras measure the fit and form of every vial for best results in the market today. These vials must be used with MicroSolv brand screw caps in able to work properly

**95010-0CV** 100/pack  
**95020-0CV-K** 1000/case  
10ml clear glass vials.  
46 x 22.5mm  
Rounded Bottom.



**10ML**

**95010-0AV** 100/pack  
**95020-0AV-K** 1000/case  
10ml amber glass vials.  
46 x 22.5mm  
Rounded Bottom.



**10ML**

**95020-0CV** 100/pack  
**95020-0CV-K** 1000/case  
20ml clear glass vials.  
75.5 x 22.5mm  
Rounded Bottom.



**20ML**

**95020-0AV** 100/pack  
**95020-0AV-K** 1000/case  
20ml amber glass vials.  
75.5 x 22.5mm  
Rounded Bottom.



**20ML**

### NOTES:

See pages 35 for compatible screw caps

# MicroSolv Brand

## 18mm Headspace Screw Caps

- **Avoid Crimping**
- **Magnetic and Screw Top**
- **Headspace and SPME**

### SPECIFICATIONS:

Center Hole: 8mm  
Screw Thread: 18mm  
Cap Material: Metal, Magnetic

These precision, magnetic screw caps are designed for headspace analysis and for the MicroSolv brand screw top headspace vials on the opposing page. All septa materials are made for headspace and are therefore ultra clean and tested.

Save time and money with screw top vials in headspace or SPME and protect the SPME fiber. Compatible with CTC Combi Pal, Varian, Gerstel, Shimadzu, Perkin-Elmer and Agilent autosamplers.

#### 95020-21S-T 100/pack

Caps, magnetic screw top  
white silicone/red PTFE star  
shape **precut** septa for  
SPME. 1.5mm thick, 55 shore A.



#### 95020-25S-T 100/pack

Caps, magnetic screw top  
white silicone/aluminum foil  
septa. 1.3mm thick, 50 shore A.



#### 95020-40T-S 100/pack

Caps, magnetic screw top  
red butyl rubber/ grey  
PTFE septa. 1.6mm thick, 55  
shore A.



#### 95020-55S-W 100/pack

Caps, magnetic screw top  
white silicone/blue PTFE  
septa. 1.6mm thick, 55 shore A.



#### 95020-45S-T 100/pack

Caps, magnetic screw top  
transparent silicone/ white  
PTFE septa. 1.3mm thick, 45 shore  
A.



#### 95020-45S-W 100/pack

Caps, magnetic screw top  
white silicone/ red PTFE  
septa. 1.3mm thick, 45 shore A.



### NOTES:

See pages 34 for compatible vials

# MicroSolv Brand

## 20mm Crimp Top Headspace Vials

### SPECIFICATIONS:

**Glass Type:** 1st Hydrolytic class A, TYPE 1  
**Crimp Top:** Serum finish, 20mm

- **Standard of the Headspace Industry**
- **Form Monitored by Computer**
- **Save Money From OEM Prices; Same Quality**

MicroSolv standard crimp top headspace autosampler vials were designed for use in instruments such as CTC, Agilent, Perkin-Elmer and Varian and work in many other brands as well.

These vials are made for headspace analysis and computerized, inline cameras measure the fit and form of every vial for best results in the market today.

### 95025-AG-06C 100/pack

6ml clear, long neck,  
flat bottom vials  
38mm x 22mm.  
Agilent & Dani Fisons  
autosamplers.



**6ML**

### 95025-AG-10C 100/pack

10ml clear, long neck,  
flat bottom vials  
46 x 22.5mm.  
Agilent & Dani Fisons  
autosamplers.



**10ML**

### 95025-AG-20C 100/pack

20ml clear, long neck,  
flat bottom vials  
75.5 x 22.5mm.  
Agilent & Dani Fisons  
autosamplers.



**20ML**

### 95025-CT-10A 100/pack

10ml amber, standard neck,  
rounded bottom vials  
46 x 22.5mm.  
CTC, Varian & Fisons  
autosamplers.



**10ML**

### 95025-CT-10C 100/pack

10ml clear, standard neck,  
rounded bottom vials  
46 x 22.5mm.  
CTC, Varian & Fisons  
autosamplers.



**10ML**

### 95025-CT-20A 100/pack

20ml amber, standard neck,  
rounded bottom vials  
75.5 x 22.5mm.  
CTC, Varian & Fisons  
autosamplers.



**20ML**

### 95025-CT-20C 100/pack

20ml clear, standard neck,  
rounded bottom vials  
75.5 x 22.5mm.  
CTC, Varian & Fisons  
autosamplers.



**20ML**

### NOTES:

See pages 38 & 39 for compatible caps



# MicroSolv Brand

## 20mm Crimp Top Headspace Vials

- **Standard of the Headspace Industry**
- **Form Monitored by Computer**
- **Save Money From OEM Prices; Same Quality**

**SPECIFICATIONS:**

**Glass Type:** 1st Hydrolytic class A, TYPE 1  
**Crimp Top:** Serum finish, 20mm

MicroSolv standard crimp top headspace autosampler vials were designed for use in instruments OEM such as CTC, Agilent, Perkin-Elmer and Varian and work in many other brands as well.

These vials are made for headspace analysis and computerized, inline cameras measure the fit and form of every vial for best results in the market today.

**95025-PE-05C** 100/pack  
 5ml clear, standard neck,  
 rounded bottom vials  
 38.2 x 22.5mm.  
 Perkin-Elmer autosamplers.



**5ML**

**95025-PE-20A** 100/pack  
 20ml amber, standard neck,  
 rounded bottom vials  
 75.5 x 23mm.  
 Perkin-Elmer & Tekmar  
 autosamplers.



**20ML**

**95025-PE-20C** 100/pack  
 20ml clear, standard neck,  
 rounded bottom vials  
 75.5 x 23mm.  
 Perkin-Elmer & Tekmar  
 autosamplers.



**20ML**

**95025-PE-20WC** 100/pack  
 20ml clear, standard neck,  
 rounded bottom write on  
 patch vials 75.5 x 23mm.  
 Perkin-Elmer & Tekmar  
 autosamplers.



**20ML**

**95025-VN-05C** 100/pack  
 5ml clear, standard neck,  
 flat bottom vials  
 38 x 22mm.  
 Varian autosamplers



**5ML**

**95025-VN-10C** 100/pack  
 10ml clear, standard neck,  
 flat bottom vials  
 54.5 x 20mm.  
 Varian autosamplers.



**10ML**

**95025-SPME** 100/pack  
 20ml clear, special top,  
 flat bottom vials  
 75.5 x 22.5mm.  
 CTC/PAL SPME autosamplers.



**20ML**

**NOTES:**  
 See pages 38 & 39 for compatible caps

## MicroSolv Brand 20mm Headspace Crimp Caps & Septa

**OUR MOST POPULAR  
CONFIGURATIONS**  
Others Available, Please Inquire

### SPECIFICATIONS:

**Crimp Top:** Serum finish, 20mm

- **Standard of the Headspace Industry**
- **Save Money From OEM Prices;  
Same Quality**

MicroSolv standard headspace crimp caps were designed for use in instruments such as CTC, Agilent, Perkin-Elmer and Varian and work in many other brands as well.

Using only the highest quality materials for headspace, each cap is designed for different methods and instruments. Other septa and caps are available, if interested please contact our customer service department for details.

**95025-01-1S** 100/pack  
Standard aluminum cap  
10mm center hole  
dark grey butyl rubber septa  
55 Shore A, 3.0mm thick



**95025-01-2S** 100/pack  
Pressure relief aluminum cap  
8mm center hole  
dark grey butyl rubber septa  
55 Shore A, 3.0mm thick



**95025-01-3D** 100/pack  
Gold magnetic aluminum cap  
5mm center hole  
dark grey Viton, butyl rubber  
sept 55 Shore A, 3.0mm thick



**95025-02-1S** 100/pack  
Standard aluminum cap  
10mm center hole  
grey butyl rubber/PTFE septa  
50 Shore A, 3.0mm thick



**95025-02-2S** 100/pack  
Pressure relief aluminum cap  
8mm center hole  
grey butyl rubber/PTFE septa  
50 Shore A, 3.0mm thick



**95025-03-1S** 100/pack  
Standard aluminum cap  
10mm center hole grey butyl  
rubber/PTFE Pharma-Fix septa  
50 Shore A, 3.0mm thick



**95025-03-2S** 100/pack  
Pressure relief aluminum cap  
8mm center hole grey butyl  
rubber/PTFE Pharma-Fix septa  
50 Shore A, 3.0mm thick



**95025-03-3D** 100/pack  
Gold magnetic aluminum cap  
5mm center hole grey butyl  
Rubber/PTFE Pharma-Fix septa  
50 Shore A, 3.0mm thick



**95025-04-1S** 100/pack  
Standard aluminum cap  
10mm center hole transparent  
silicone/ white PTFE septa  
45 Shore A, 3.0mm thick



**95025-04-2S** 100/pack  
Pressure relief aluminum cap  
8mm center hole transparent  
silicone/ white PTFE septa  
45 Shore A, 3.0mm thick



**95025-04-3D** 100/pack  
Gold magnetic aluminum cap  
5mm center hole transparent  
silicone/ white PTFE septa  
45 Shore A, 3.0mm thick



**95025-04-4D** 100/pack  
Gold magnetic aluminum cap  
8mm center hole transparent  
silicone/ blue PTFE septa  
45 Shore A, 3.0mm thick



## AUTOSAMPLER VIALS

**95025-04-5R** 100/pack  
Bimetallic aluminum cap  
8mm center hole transparent  
silicone/ blue PTFE septa  
45 Shore A, 3.0mm thick.



**95025-07-1S** 100/pack  
Standard aluminum cap  
10mm center hole white  
silicone/ natural PTFE septa  
45 Shore A, 3.0mm thick.



**95025-07-2S** 100/pack  
Pressure relief aluminum cap  
8mm center hole white  
silicone/ natural PTFE septa  
45 Shore A, 3.2mm thick.



**95025-08-1S** 100/pack  
Standard aluminum cap  
10mm center hole white  
silicone/ white PTFE septa  
45 Shore A, 3.0mm thick.



**95025-08-2S** 100/pack  
Pressure relief aluminum cap  
8mm center hole white  
silicone/ white PTFE septa  
45 Shore A, 3.0mm thick.



**95025-09-1S** 100/pack  
Standard aluminum cap  
10mm center hole translucent  
silicone/ natural PTFE septa  
45 Shore A, 3.0mm thick.



**95025-09-2S** 100/pack  
Pressure relief aluminum cap  
8mm center hole translucent  
silicone/ natural PTFE septa  
45 Shore A, 3.0mm thick.



**95025-09-5R** 100/pack  
Bimetallic aluminum cap  
8mm center hole translucent  
silicone/ natural PTFE septa  
45 Shore A, 3.0mm thick.



**95025-14-1S** 100/pack  
Standard aluminum cap  
10mm center hole white  
silicone/ foil septa  
45 Shore A, 3.0mm thick.



### ULTRA LOW BLEED

**95025-14-2S** 100/pack  
Pressure Relief aluminum cap  
8mm center hole white  
silicone/ foil septa  
45 Shore A, 3.0mm thick.



**95025-14-3D** 100/pack  
Gold magnetic aluminum cap  
5mm center hole white  
silicone/ foil septa  
45 Shore A, 3.0mm thick.



**95025-23-4D** 100/pack  
Gold magnetic aluminum cap  
8mm center hole white  
silicone/ blue PTFE septa  
55 Shore A, 1.5mm thick.



Each of the septa below are available in the above configurations, please inquire for others.

**95025-01**  
Dark grey butyl rubber septa  
55 Shore A, 3.0mm thick



**95025-02**  
Grey butyl rubber/PTFE septa  
50 Shore A, 3.0mm thick



**95025-03**  
Grey butyl Rubber/PTFE  
Pharma-Fix septa 50 Shore A,  
3.0mm thick



**95025-04**  
Translucent silicone/ white PTFE  
septas 45 Shore A, 3.0mm thick



**95025-07**  
White silicone/ natural PTFE  
septas 45 Shore A, 3.0mm thick



**95025-08**  
White silicone/ white PTFE septa  
45 Shore A, 3.0mm thick



**95025-09**  
Translucent silicone/ natural PTFE  
septas 45 Shore A, 3.0mm thick



**95025-14**  
White silicone/ foil septa  
45 Shore A, 3.0mm thick



**95025-23**  
Not shown  
White silicone/ blue PTFE septa  
55 Shore A, 1.5mm thick

# AQ™ Brand with RSA™ glass

## 96 Well Plates & Mats



### SPECIFICATIONS:

<b>Glass Type:</b>	Type 1, 33 Expansion Borosilicate Made with RSA Glass
<b>Mat Type:</b>	Silicone Rubber/PTFE
<b>Racks:</b>	Polypropylene (Ritter brand)

- Highest Quality Sealing
- Made with RSA Glass
- Maximum Recovery Inserts
- Non-Coring Mats

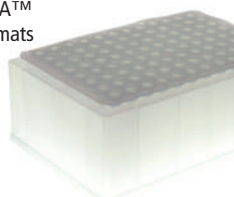
These 96 well plates with glass inserts are designed for use in the Alliance HT™ system by Waters and other autosamplers that use 96 well plates with sealing mats.

The borosilicate glass inserts provide a suitable container when plastic plates are not indicated. Available as 1ml or 700µL total

volume these inserts are made with RSA glass for ultimate data precision and are available deactivated as well.

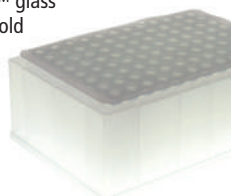
The sealing mats are made of pure silicone rubber and have a PTFE layer that provides the best sealing possible. Order pre slit or non slit.

**95096-07-RS** 1/each  
**95096-07-RSM** 20/case  
96 well plate, w/700µL RSA™ glass inserts. Sealing cap mats sold separately



**700µL**

**95096-10-RS** 1/each  
**95096-10-RSM** 18/case  
96 well plate, w/1ml RSA™ glass inserts. Sealing cap mats sold separately.



**1ML**

**95096-707-RS** 250/pack  
Glass inserts, 700µL for 96 well plates, made with RSA™ glass



**700µL**

**95096-710-RS** 250/pack  
Glass inserts, 1ml for 96 well plates, made with RSA™ glass

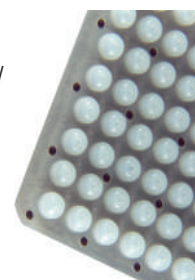


**1ML**

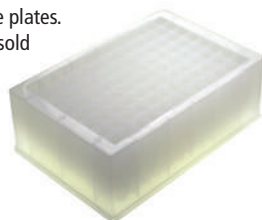
**95096-46** 1/each  
Sealing cap mat for 96-well plate inserts. Silicone Rubber/PTFE faced w/ pre-slit welled out bottoms.



**95096-39** 1/each  
Sealing cap mat for 96-well plate inserts. Silicone Rubber/PTFE faced w/ welled out bottoms.



**95096-PL** 20/case  
96-well polypropylene plates. Inserts and cap mats sold separately.



### NOTES:



# MicroSolv Brand

## Heavy Wall Reaction Vials & Caps

- Highest Quality
- Compare to V-Vials
- Autoclavable
- Maximum Recovery Bottoms

### SPECIFICATIONS:

Glass Type:	Type 1, 33 Expansion Borosilicate
Liner Type:	Silicone Rubber/PTFE, Fitted
Caps:	Polypropylene

These vials are designed for maximum recovery of your samples when you are performing reactions that can be exothermic or when heat or cold is used. These vials are made with TYPE-1, 33 Expansion glass and are 2.5mm thick for higher pressures or temperature applications that range from -75° to 165°C.

Economically priced, compare these vials to V-Vials or Heavy Wall CD vials. Vials and caps are supplied separately. Open hole caps for use in autosamplers are available, please inquire for more information.

**98101-RHW** 12/pack  
Vials, heavy wall reaction, 1ml,  
clear glass 13 x 41mm, 13-425  
threads. Caps sold separately.



**1ML**

**98102-RHW** 12/pack  
Vials, heavy wall reaction, 2ml,  
clear glass 20 x 40mm, 20-400  
threads. Caps sold separately.



**2ML**

**98103-RHW** 12/pack  
Vials, heavy wall reaction, 3ml,  
clear glass 20 x 46mm, 20-400  
threads. Caps sold separately.



**3ML**

**98105-RHW** 12/pack  
Vials, heavy wall reaction, 5ml,  
clear glass 20 x 61mm, 20-400  
threads. Caps sold separately.



**5ML**

**98100-SP13-K** 100/pack  
Caps, storage, solid top with  
silicone/PTFE fitted liners. Black  
polypropylene, 13-425 threads.



**98100-SP20-K** 100/pack  
Caps, storage, solid top with  
silicone/PTFE fitted liners. Black  
polypropylene, 20-400 threads.



NOTES:



# Quick/Snap Convenient Storage Vials & Caps

### SPECIFICATIONS:

Glass: 3rd Hydrolytic Class  
Snap Caps: Polyethylene-Push on

- Easy to Handle
- Quick and Easy
- No Liners Required in the Cap

These easy to use storage vials and caps use a push on technology for ease and comfort. Use these vials to store samples that are not critical.

**97010-CV05** 100/pack  
Vials, Quick Snap storage  
5ml, 40 x 22mm, ND18 snap  
Use with small caps.



**5ML**

**97010-CV10** 100/pack  
Vials, Quick Snap storage  
10ml, 50 x 22mm, ND18 snap  
Use with small caps.



**10ML**

**97010-SC18** 100/pack  
Small caps, Quick Snap storage  
transparent 19.8 x 5.2mm  
Use with ND18 vials.



**97010-CV15** 100/pack  
Vials, Quick Snap storage  
15ml, 48 x 26mm, ND22 snap  
Use with large caps.



**15ML**

**97010-CV25** 100/pack  
Vials, Quick Snap storage  
25ml, 65 x 26mm, ND22 snap  
Use with large caps.



**25ML**

**97010-SC22** 100/pack  
Large caps, Quick Snap storage  
transparent 23.5 x 5.5mm  
Use with ND22 vials.



NOTES:

Can't find what you need?  
Give us a call  
at 1-732-578-1777

# Storage Vial System

## Screw Top Vials & Caps for Long Term Storage

- Center Draining for Max. Recovery
- Large Volume - Small Dead Volume
- Use in Chemical Library or Stability Testing

### SPECIFICATIONS:

<b>Glass Type:</b>	1st Hydrolytic Class A Borosilicate Glass, 33 Expansion
<b>Screw Caps:</b>	Polypropylene, ribbed, closed top
<b>Liner:</b>	Silicone Rubber with PTFE layers

Use these vials and caps to store chemical compounds for years. Large volume for maximum storage and center drain allows for maximum recovery when it is needed most. Vials and 13-425 caps sold as Easy Purchase Packs or separately.

Vials are available silanized form to deactivate any surface activity or to prevent adsorption to the vial wall.

**9514S-0CV** 100/pack  
Vials, library storage  
3.8ml, 15 x 51mm, 13-425 thread



**3.8ML**

**9514S-0DCV** 100/pack  
Vials, deactivated library storage  
3.8ml, 15 x 51mm, 13-425 thread  
SILANIZED



**3.8ML**

**9504S-05S-W** 100/pack  
Cap, storage w/ red silicone/PTFE  
liner. White polypropylene. 13-425  
for use with library storage vials.



**9514S-1CP-SW** 100/pack  
Easy Purchase Pack  
Vials, library storage 3.8ml,  
15 x 51mm & white storage caps  
w/ red silicone/PTFE liner.



**9514S-1DCP-SW** 100/pack  
Easy Purchase Pack  
Vials, deactivated library storage  
3.8ml, 15 x 51mm, Silanized  
& white storage caps  
w/ red silicone/PTFE liner



### NOTES:

Septa in open top caps are available for these vials please see page 8.  
See page 47 for silanizing and deactivation process.

## Storage Vial System

### Screw Top Vials & Caps for Long Term Storage

#### SPECIFICATIONS:

**Glass:** 1st Hydrolytic Class A  
Borosilicate Glass,  
**Screw Caps:** Polypropylene, ribbed, closed top

- High Quality Glass for Long Term Storage
- Other Sizes are Available
- Can be Used for EPA testing

Use these vials and caps to store chemical compounds for years. Packaged in clean packs, these vials are an excellent choice for storing liquids and solids for long periods of time.

**97015-CV-08** 100/pack  
Vials, storage 8ml, clear glass  
61 x 16.6mm, 15-425 threads.



**8ML**

**97015-AV-08** 100/pack  
Vials, storage 8ml, amber glass  
61 x 16.6mm, 15-425 threads.



**8ML**

**97015-SP** 100/pack  
Caps, storage w/ natural rubber/  
transparent TEF liner.  
15-425 threads, black  
polypropylene.



**97015-CV-12** 100/pack  
Vials, storage 12ml, clear glass  
66 x 18.5mm, 15-425 threads.



**12ML**

**97015-AV-12** 100/pack  
Vials, storage 12ml, amber glass  
66 x 18.5mm, 15-425 threads.



**12ML**

**97015-SP** 100/pack  
Caps, storage w/ natural rubber/  
transparent TEF liner.  
15-425 threads, black  
polypropylene.



**97020-OCV** 100/pack  
Vials, storage 20ml, clear glass  
57 x 27.5mm, 24-400 threads.  
Can be used in EPA testing.



**20ML**

**97020-OAV** 100/pack  
Vials, storage 20ml, amber glass  
57 x 27.5mm, 24-400 threads  
Can be used in EPA testing.



**20ML**

**97040-SP-24** 100/pack  
Caps, storage w/ butyl rubber/  
Grey PTFE liner.  
24-400 threads, white  
polypropylene.



NOTES:

# Storage Vial System

## Screw Top Vials & Caps for Long Term Storage

**97030-0CV** 100/pack  
Vials, storage 30ml, clear glass  
72.5 x 27.5mm, 24-400 threads.  
Can be used in EPA testing.



**30ML**

**97030-0AV** 100/pack  
Vials, storage 30ml, amber glass  
72.5 x 27.5mm, 24-400 threads.  
Can be used in EPA testing.



**30ML**

**97040-SP-24** 100/pack  
Caps, storage w/ butyl rubber/  
Grey PTFE liner. 24-400 threads,  
white polypropylene.



**97040-0CV** 100/pack  
Vials, storage 40ml, clear glass  
95 x 27.5mm, 24-400 threads.  
Can be used in EPA testing.



**40ML**

**97040-0AV** 100/pack  
Vials, storage 40ml, amber glass  
95 x 27.5mm, 24-400 threads.  
Can be used in EPA testing.



**40ML**

**97040-SP-24** 100/pack  
Caps, storage w/ butyl rubber/  
Grey PTFE liner. 24-400 threads,  
white polypropylene.



**97060-0CV** 100/pack  
Vials, storage 60ml, clear glass  
140 x 27.5mm, 24-400 threads.  
Can be used in EPA testing.



**60ML**

**97060-0AV** 100/pack  
Vials, storage 60ml, amber glass  
140 x 27.5mm, 24-400 threads.  
Can be used in EPA testing.



**60ML**

**97040-SP-24** 100/pack  
Caps, storage w/ butyl rubber/  
Grey PTFE liner. 24-400 threads,  
white polypropylene.



NOTES:

## Vial Accessories Crimpers & Racks/Filling Stations

### SPECIFICATIONS:

- Racks:** Acrylic material with silicone base  
Transparent
- Crimping Tools:** Chemical Resistant Finish  
Hardened Crimping Jaws-Long Life

The vial racks/filling stations are made of acrylic material so you can see into the vial as you fill it. Also, the silicone base makes them an excellent filling station as they will not slide on the bench. Racks for 8mm and 11mm vials can accommodate conical bottom vials.

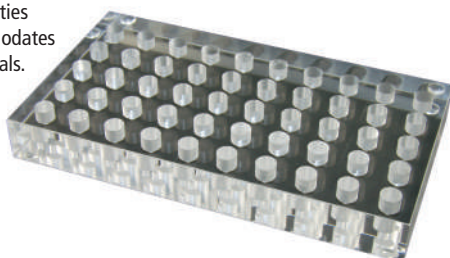
These crimping tools are used manually and are the standard of

- **Easy and Convenient**
- **Rugged and Durable Tools**
- **See Through Racks**

the industry. Easy to use and very convenient they are rugged due to the special alloy used in the crimping jaws. Easily adjusted for the right crimping tension to prevent leaking from your vial, the adjustment tool is included with the shipment.

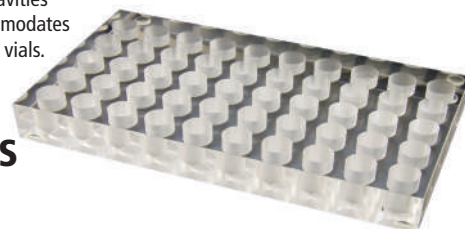
Repair service is available if ever needed.

**9508R-01** 1/each  
Racks, acrylic, for 8mm vials.  
173 x 95 x 20mm, 50 cavities  
8.5mm diameter. Accommodates  
flat and conical bottom vials.



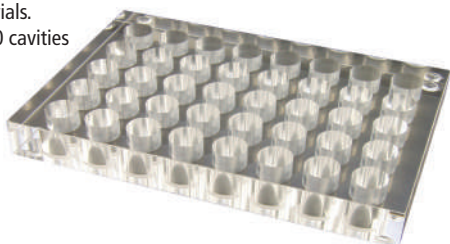
### 8MM VIALS

**9502R-01** 1/each  
Racks, acrylic, for 12mm vials.  
173 x 95 x 20mm, 50 cavities  
12mm diameter. Accommodates  
flat and conical bottom vials.



### 12MM VIALS

**9504R-01** 1/each  
Racks, acrylic, for 15mm vials.  
175.8 x 115.5 x 20mm, 40 cavities  
15.1mm diameter.



### 15MM VIALS

**95025-R** 1/each  
Racks, acrylic, for Headspace vials.  
160 x 160 x 30mm, 25 cavities  
24mm diameter.



### HEADSPACE VIALS

**9508C-CRIMP** 1/each  
Crimp tool, manual, for 8mm  
aluminum crimp caps.

**9502C-40T-CRIMP** 1/each  
Crimp tool, manual, for 11mm  
aluminum crimp caps.

**95025-CRIMP** 1/each  
Crimp tool, manual, for 20mm  
aluminum crimp caps.



### NOTES:

Other size crimping tools, de-cappers  
and custom size racks are available,  
please inquire.



## Septa

- **Quality Assured**
- **Leading Silicone Suppliers**
- **All QC Tested and Certified**

The septa that is used in the Basic™, MicroSolv™ and AQ™ brands of caps are produced by the best manufacturers of silicone septa and liner materials in the world. These leading companies are experts in the field and MicroSolv management has been working with them for many years to provide excellent chromatography materials.

Most of the septa materials in our products are exactly the

same as in OEM product and therefore the specifications meet or exceed what is required for good chromatography with your autosampler.

If you do not see what you want in this catalog, it is very likely that one of our sales consultants can assist you in finding exactly what you need.



## Silanizing

- **State of the Art Process**
- **Long Shelf Life**
- **Avoid Problems with Poor Coverage**
- **Used with RSA Glass for Premium Coverage**

As in glass working and vials, not all silanizing processes are the same. MicroSolv has been using the same gas phase deactivation process with continual improvements over the years to provide you with the very best possible product. When combined with high quality glass, especially RSA glass, the results are incredible with virtually 100% coverage and deactivation.

Chromatography vials and vial inserts can be treated with gas phase reactive reagents to produce a hydrophobic glass surface. Vials treated by this procedure can be stored indefinitely prior to use. Pharmaceutical compounds, biopolymers, agrochemicals, agrochemical metabolites, and natural products are target candidate markets for treated chromatography vials.

**HOW TO ORDER:** Any glass item in this catalog is available silanized (deactivated). To order, contact our customer service department with the catalog number of that which you wish to deactivate. We will be happy to supply a catalog number for you as well as pricing and lead time. The more common items are in stock. You can also visit our website and use our "Keyword or Brand Names" search engine found on every page using the green tab at the of the page: search on "silanize."

### Advantages of MicroSolv's Gas Phase Glass Deactivation

- Gas phase bonding will yield no residual solvents which may interfere with product stability or analysis.
- Gas phase bonding agents are stable on glass surfaces for many years prior to addition of product material.
- Gas phase bonding agents are stable for long term storage of sample extracts when used with water based, buffer, and solvent systems.
- Gas phase bonding agents modify the wettability of the glass surfaces for polar compounds such as proteins, phenols, and amines. These chemical classes of compounds are stable and will not adsorb on glass surfaces of the container when applied in water based systems, buffers, and solvent systems for a long period of time, usually several years, depending on the coating thickness on the glass surface, the type of protein, phenol, or amine placed into the solution, and the concentrations of these compounds.
- Gas phase bonding agents do not interfere with analysis of product or residue materials using HPLC or GC since no residual solvent is left on the surface of the vial and the bonded silane will not dissolve in the samples stored in the vial.

Do not use silanized vials or inserts with strong solutions of aqueous bases such as strong NaOH solutions. Deactivation reagents can deposit a chloride residue on vial surfaces that will interfere with some HPLC, LCMS & GC analyses.

# Index

## Catalog Number to Page Number

CAT NO	PAGE NO	CAT NO	PAGE NO	CAT NO	PAGE NO	CAT NO	PAGE NO
95001-0CP.....	25	95025-14-3D.....	39	9502C-30CB-M.....	27	9502C-WAV.....	17
95001-0AP.....	25	95025-23.....	39	9502C-3CP.....	16	9502C-WCV.....	17
95001-02N.....	25	95025-23-4D.....	39	9502C-3WAP.....	16	9502R-01.....	46
95001-ASV-EPP.....	9	95025-AG-06C.....	36	9502C-3WCP.....	16	9502S-01N.....	15
95001-CSV-EPP.....	9	95025-AG-10C.....	36	9502C-40T-B.....	6	9502S-01N.....	20
95002-0CP-A.....	9	95025-AG-20C.....	36	9502C-40T-B-M.....	6	9502S-02CP.....	20
95010-0AV.....	34	95025-CRIMP.....	46	9502C-40T-D.....	6	9502S-02CP-K.....	15
95010-0AV-K.....	34	95025-CT-10A.....	36	9502C-40T-D-M.....	6	9502S-02CP-K.....	20
95010-0CV.....	34	95025-CT-10C.....	36	9502C-40T-D-M.....	6	9502S-02E.....	15
95010-0CV-K.....	34	95025-CT-20A.....	36	9502C-40T-G.....	6	9502S-02E.....	20
95020-0AV.....	34	95025-CT-20C.....	36	9502C-40T-G-M.....	6	9502S-02N.....	15
95020-0AV-K.....	34	95025-PE-05C.....	37	9502C-40T-R.....	6	9502S-02N.....	20
95020-0CV.....	34	95025-PE-20A.....	37	9502C-40T-R-M.....	6	9502S-02N-RS.....	31
95020-0CV-K.....	34	95025-PE-20C.....	37	9502C-40T-S.....	6	9502S-02PP.....	15
95020-21S-T.....	35	95025-PE-20WC.....	37	9502C-40T-S-M.....	6	9502S-02PP.....	20
95020-25S-T.....	35	95025-R.....	46	9502C-40T-S.....	19	9502S-03N.....	15
95020-40T-S.....	35	95025-SPME.....	37	9502C-40T-S-M.....	19	9502S-03N.....	20
95020-45S-T.....	35	95025-VN-05C.....	37	9502C-41S.....	19	9502S-04N.....	15
95020-45S-W.....	35	95025-VN-10C.....	37	9502C-41S-M.....	19	9502S-04N.....	20
95020-55S-W.....	35	9502C-0-0CV.....	6	9502C-50CB.....	19	9502S-05-B.....	13
95025-01.....	39	9502C-06-LCC.....	18	9502C-50CB-M.....	19	9502S-05-B-M.....	13
95025-01-1S.....	38	9502C-06-LCC.....	27	9502C-ASV-EPP.....	9	9502S-05N.....	15
95025-01-2S.....	38	9502C-07-LCC.....	18	9502C-CSV-EPP.....	9	9502S-05N.....	20
95025-01-3D.....	38	9502C-07-LCC.....	27	9502C-E-0AV.....	5	9502S-05N-K.....	15
95025-02.....	39	9502C-0CV.....	17	9502C-E-0CV.....	5	9502S-05N-K.....	20
95025-02-1S.....	38	9502C-0-WAV.....	6	9502C-E-15B.....	5	9502S-06-LCC.....	13
95025-02-2S.....	38	9502C-0-WCV.....	6	9502C-E-15B-M.....	5	9502S-07-LCC.....	13
95025-03.....	39	9502C-10CB.....	18	9502C-E-15G.....	5	9502S-09-PE.....	13
95025-03-1S.....	38	9502C-10CB.....	27	9502C-E-15G-M.....	5	9502S-09-PE.....	24
95025-03-2S.....	38	9502C-10CB-M.....	18	9502C-E-15K.....	5	9502S-09-PE-K.....	24
95025-03-3D.....	38	9502C-10CB-M.....	27	9502C-E-15K-M.....	5	9502S-09-SR.....	13
95025-04.....	39	9502C-10CG.....	18	9502C-E-15R.....	5	9502S-09-SR-K.....	13
95025-04-1S.....	38	9502C-10CG-M.....	18	9502C-E-15R-M.....	5	9502S-0CV.....	12
95025-04-2S.....	38	9502C-10CK.....	18	9502C-E-15Y.....	5	9502S-10C-B.....	13
95025-04-3D.....	38	9502C-10CK-M.....	18	9502C-E-15Y-M.....	5	9502S-10C-B-M.....	13
95025-04-4D.....	38	9502C-10CN.....	18	9502C-E-WAV.....	5	9502S-1CP.....	11
95025-04-5R.....	39	9502C-10CN-M.....	18	9502C-E-WCV.....	5	9502S-1CP.....	16
95025-07.....	39	9502C-10CR.....	18	9502C-S08-T.....	19	9502S-1WAP.....	11
95025-07-1S.....	39	9502C-10CR-M.....	18	9502C-S08-T-M.....	19	9502S-1WCP.....	11
95025-07-2S.....	39	9502C-10CY.....	18	9502C-S10-T.....	19	9502S-20C-B.....	13
95025-08.....	39	9502C-10CY-M.....	18	9502C-S10-T-M.....	19	9502S-20C-B-M.....	13
95025-08-1S.....	39	9502C-1CP.....	16	9502C-S20-T.....	19	9502S-30C-B.....	13
95025-08-2S.....	39	9502C-1WAP.....	16	9502C-S20-T-M.....	19	9502S-30C-B-M.....	13
95025-09.....	39	9502C-1WCP.....	16	9502C-S30-T.....	19	9502S-34C-B.....	13
95025-09-1S.....	39	9502C-20CB.....	18	9502C-S30-T-M.....	19	9502S-34C-B-M.....	13
95025-09-2S.....	39	9502C-20CB-M.....	18	9502C-S34-T.....	19	9502S-3CP.....	11
95025-09-5R.....	39	9502C-30CB.....	18	9502C-S34-T-M.....	19	9502S-3WAP.....	11
95025-14-1S.....	39	9502C-30CB.....	27	9502C-S80-T.....	19	9502S-3WCP.....	11
95025-14-2S.....	39	9502C-30CB-M.....	18	9502C-S80-T-M.....	19	9502S-E-0AV.....	4

CAT NO	PAGE NO	CAT NO	PAGE NO	CAT NO	PAGE NO	CAT NO	PAGE NO
9502S-E-0CV.....	4	9508C-10T-S.....	3	9512S-1CP-RS.....	30	9582S-11-0CV.....	2
9502S-E-15B.....	4	9508C-30T-S.....	3	9512S-1CP-T.....	23	9582S-20C-K.....	2
9502S-E-15B-M.....	4	9508C-40T-S.....	3	9512S-1MP-RS.....	30	9582S-20C-K-M.....	2
9502S-E-15G.....	4	9508C-CRIMP.....	46	9512S-3CP-RS.....	30	9582S-WAV.....	2
9502S-E-15G-M.....	4	9508C-FB07-AV.....	3	9512S-3CP-T.....	23	9582S-WCV.....	2
9502S-E-15K.....	4	9508CFB07-CV.....	3	9512S-3MP-RS.....	30	97010-CV05.....	42
9502S-E-15K-M.....	4	9508C-FB08-CV.....	3	9512S-9CP-T.....	23	97010-CV10.....	42
9502S-E-15P.....	4	9508R-01.....	46	9514S-0CV.....	43	97010-CV15.....	42
9502S-E-15P-M.....	4	95096-07-RS.....	40	9514S-0DCV.....	43	97010-CV25.....	42
9502S-E-15R.....	4	95096-07-RSM.....	40	9514S-1CP-SW.....	43	97010-SC18.....	42
9502S-E-15R-M.....	4	95096-10-RS.....	40	9514S-1DCP-SW.....	43	97010-SC22.....	42
9502S-E-15Y.....	4	95096-10-RSM.....	40	9532C-0CV.....	26	97015-AV-08.....	44
9502S-E-15Y-M.....	4	95096-39.....	40	9532C-0CV-RS.....	32	97015-AV-12.....	44
9502S-E-WAV.....	4	95096-46.....	40	9532C-0PV.....	17	97015-CV-08.....	44
9502S-E-WCV.....	4	95096-707-RS.....	40	9532C-0PV-K.....	17	97015-CV-12.....	44
9502S-PP-AMBER.....	12	95096-710-RS.....	40	9532C-0XV.....	17	97015-SP.....	44
9502S-PP-CLEAR.....	12	95096-PL.....	40	9532C-0XV-K.....	17	97020-0AV.....	44
9502S-WAV.....	12	9509C-WAV-AQ.....	26	9532C-MS.....	17	97020-0CV.....	44
9502S-WCV.....	12	9509C-WCV-AQ.....	26	9532C-MS-K.....	17	97030-0AV.....	45
9503S-E-0CV.....	7	9509S-10C-B.....	24	9532C-TS-A.....	17	97030-0CV.....	45
9503S-10C-K.....	7	9509S-10C-B-K.....	24	9532C-TS-C.....	17	97040-0AV.....	45
9503S-10C-K-M.....	7	9509S-1WAP-AQ.....	22	9532C-WAV.....	26	97040-0CV.....	45
9503S-30C-K.....	7	9509S-1WAP-RS.....	30	9532S-0AV.....	24	97040-SP-24.....	44
9503S-30C-K-M.....	7	9509S-1WCP-AQ.....	22	9532S-0CV.....	24	97040-SP-24.....	45
9503S-E-WAV.....	7	9509S-1WCP-RS.....	30	9532S-0CV-RS.....	31	97060-0AV.....	45
9503S-E-WCV.....	7	9509S-30C-B.....	24	9532S-0PV.....	14	97060-0CV.....	45
9503S-GR.....	7	9509S-30C-B-K.....	24	9532S-0PV-K.....	14	98100-SP13-K.....	41
9503S-GR-M.....	7	9509S-3WAP-AQ.....	22	9532S-0XV.....	14	98100-SP20-K.....	41
95040-40-T-D.....	13	9509S-3WAP-RS.....	30	9532S-0XV-K.....	14	98101-RHW.....	41
9504C-ASV-EPP.....	9	9509S-3WCP-AQ.....	22	9532S-1CP.....	23	98102-RHW.....	41
9504C-CSV-EPP.....	9	9509S-3WCP-RS.....	30	9532S-1CP-RS.....	30	98103-RHW.....	41
9504R-01.....	46	9509S-9WAP-AQ.....	22	9532S-3CP.....	23	98105-RHW.....	41
9504S-03N.....	8	9509S-9WCP-AQ.....	22	9532S-3CP-RS.....	30		
9504S-04N.....	8	9509S-WAV-AQ.....	24	9532S-9CP.....	23		
9504S-05C-BLK.....	8	9509S-WAV-RS.....	31	9532S-MS.....	14		
9504S-05C-BLK-M.....	8	9509S-WCV-AQ.....	24	9532S-MS-K.....	14		
9504S-05S-W.....	8	9509S-WCV-RS.....	31	9532S-TS-A.....	14		
9504S-05S-W.....	43	9512C-0CV.....	26	9532S-TS-C.....	14		
9504S-0AV.....	8	9512C-0CV-RS.....	32	9572C-0CV.....	17		
9504S-0CV.....	8	9512C-0CV-T.....	26	9572C-0CV-K.....	17		
9504S-10C-BK.....	8	9512C-0CV-T-RS.....	32	9572S-MS.....	12		
9504S-10C-BK-M.....	8	9512S-0AV.....	12	9582S-02N.....	2		
9504S-WAV.....	8	9512S-0AV.....	24	9582S-03-B.....	2		
9504S-WCV.....	8	9512S-0CV.....	12	9582S-03-B-M.....	2		
9508C-0CV.....	3	9512S-0CV.....	24	9582S-05N-K.....	2		
9508C-ORB.....	3	9512S-0CV-RS.....	31	9582S-05-B.....	2		
9508C-10C-B.....	3	9512S-0CV-T.....	12	9582S-05-B-M.....	2		
9508C-10C-C.....	3	9512S-0CV-T.....	24	9582S-0AV.....	2		
9508C-10C-D.....	3	9512S-0CV-T-RS.....	31	9582S-0CV.....	2		

## Index

### Alphabetical Listing

---

1ml Vials & Caps, 9, 25  
10mm Screw Top  
  Caps, 7  
  Vials, 7  
11mm Crimp Caps, 6, 19  
11mm Crimp Top  
  Caps, 6, 19  
  Vials, 6  
13mm Screw Top  
  Caps, 8  
  Inserts, 8  
  Vials, 8  
2 in 1 Kits, 9, 11, 16, 22, 23, 30, 43  
20mm Crimp Caps, 38, 39  
8mm Crimp Top  
  Caps, 3  
  Vials, 3  
8mm Screw Top  
  Caps, 2  
  Vials, 2  
96 Position Block Systems, 40  
96 Position Vials & Caps, 9, 25  
96 Well Inserts, 40  
96 Well Plates, 40  
9mm Screw Top  
  Caps, 4, 13, 24  
  Inserts, 15, 31  
  Magnetic Screw Caps, 13  
  Partial Slit, 13  
  Vials, 4, 12, 14, 24, 31

## A

Aluminum Crimp Caps, 6, 19, 38, 39  
AQ Brand Vials, 21 - 32  
AQR Caps, 24

## B

Bimetallic Caps  
  9-425 Threads, 13  
  Headspace, 39  
Butyl/PTFE Crimp Caps  
  11mm, 6  
  Headspace, 38, 39,  
Butyl/PTFE Screw Caps, 35

## C

Caps, 2 – 8, 13, 18, 19, 24, 27, 35, 38, 39,  
  42-45  
CE Vials, 12  
Center Draining Vials  
  Heavy Wall Reaction Vials, 41  
  Library Storage Vials, 43  
  Screw Tops, 12, 23, 24, 30, 31, 41, 43  
  Snap Tops, 26, 32,  
Combination Kits, 9, 11, 16, 22, 23, 30, 43  
Crimp Top Vials  
  12x32mm, 6  
  Headspace, 36, 37  
Crimpers, 46

## D

Decappers, 46

## E

Easy Purchase Packs, 11, 16, 22, 23, 30, 43  
EPA Type Vials, 44, 45  
Filling Stations, 46

## F

Flat Bottom Inserts, 15, 20

## H

Headspace  
  Crimp Caps, 38, 39  
  Crimp Top Vials, 36, 37  
  Magnetic Caps, 13, 35, 38, 39  
  Pharma-fix Seals, 38, 39  
  Racks, 46  
  Screw Caps, 35  
  Screw Top Vials, 34  
  Septa, 39  
  SPME, 35, 37

## I

Inserts Flat Bottom  
  2ml Vials, 15, 20  
Ion Chromatography Vials, 12, 30, 31, 32,

## L

Library Storage Vials, 43  
Limited Volume Sampling  
  Fused Insert Vials, 23, 24, 26, 30, 31, 32  
  Inserts, 15, 20, 31  
  Max Recovery Vials, 12, 23, 24, 26, 30,  
    31, 32  
  Micro Vials, 2, 3, 14, 17, 23, 24, 26, 30,  
    31, 32  
  MRQ Vials, 23, 24, 26, 30, 31, 32

## M

Mat for 96 Well Plates  
  Preslit, 40  
  Welled Out, 40  
Maximum Recovery Vials  
  Heavy Wall Reaction Vials, 41  
  Library Storage Vials, 43  
  Screw Tops, 23, 24, 30, 31  
  Snap Tops, 26, 32  
MicroSolv Brand Vials, 10 - 20  
MRQ Vials, 23, 24, 26, 30, 31, 32

## P

- PE Caps
  - 1ml Vials, 9, 25
  - 2ml Vials, 9
  - 4ml Vials, 9
  - 96 Position, 9, 25
  - Alcott Type, 9
  - Push Caps, 3, 9, 25, 42, 43
  - Screw Top, 13, 22, 24,
- Pharma-fix Seals, 38, 39
- Picopure, 13, 22, 24
- Plastic Vials
  - 2ml, 12
  - MicroVials, 12, 14, 17
  - Screw Top, 12, 14
  - Snap Top, 17
- Pre-slit Septa
  - 9mm Caps, 11, 13, 22, 23, 24, 30
  - Headspace, 35
  - Partial Slit, 13
  - Snap Caps, 16, 18, 19, 27
- Push On Caps
  - 1ml, 9, 25
  - 2ml, 9
  - 4ml Vials, 9
  - Shell Vials, 9
  - Storage Vials, 42

## R

- Racks, 46
- Red Rubber/PTFE
  - Caps, 3, 13, 35, 38, 39
  - Septa, 39
- Red Rubber/TEF
  - Caps, 6, 19
- RSA Glass, 28 - 32

## S

- Screw Caps, 2, 4, 7, 8, 11, 13, 22, 23, 24, 30, 35, 41, 43, 44, 45
- Screw Top Vials
  - 10-425, 7
  - 13-425, 8
  - 4ml, 8
  - 8-425, 2
  - 9-425, 4, 11, 12, 14, 22, 23, 24, 30, 31
  - Heavy Wall Reaction, 41
  - Library Storage, 43,
  - Storage, 44, 45
- Sealing Mats, 40
- Septa
  - General Page, 47
  - Headspace, 39
- Shell Vials
  - 1ml, 9
  - 2ml, 9
  - 4ml, 9
- Short Thread Vials
  - AQ, 22 - 24
  - Basik, 4
  - MicroSolv, 11, 12, 14
  - RSA Glass, 30, 31
- Silanizing
  - About, 47
- Silicone/PTFE
  - Crimp Caps, 19
  - HeadSpace Caps, 35, 38, 39
  - Screw Caps, 2, 4, 7, 8, 11, 13, 22, 23, 24, 35, 43, 44, 45
  - Snap Caps, 5, 16, 18, 19, 27
- Snap Caps
  - Basik, 3, 5,
  - MicroSolv, 16, 18, 19, 27
  - Soft Caps, 19
- Solid Caps, 13, 24, 41, 42, 43, 44, 45
- SPME, 35
- Storage Vials
  - EPA Style, 44, 45
  - Quick/Snap Type, 42
  - Screw Top, 44, 45

## T

- Topserts
  - Screw Tops, 14
  - Snap Tops, 17

## U

- Ultraclean Septa, 13

## V

- Vial Racks, 46
- Vials
  - Accessories, 46
  - AQ , 21 - 32
  - Basik, 1 - 9
  - Crimp Top, 3, 6
  - Ion Chromatography, 12, 30 -32
  - MicroSolv, 10 - 20
  - MicroVials
  - RSA Glass, 28 - 32
  - Screw Top, 2, 4, 7, 8, 11, 12, 14, 22, 23, 24, 30, 31, 34, 41, 43, 44, 45
  - Snap Top, 3, 5, 16, 17, 26, 32, 42
  - Write on, 2, 4, 5, 6, 7, 8, 11, 12, 16, 17, 22, 23, 24, 26, 30, 31, 32, 37



**www.MTC-USA.com**



MicroSolv has many other great products and technologies to help you solve problems, increase throughput & **DO MORE WITH LESS.**

- Cogent TYPE-C™ Silica HPLC Columns
- Filtration Products
- Fittings including for *UHPLC*
- HPLC Column Connectors
- Tubing: Peek, Stainless, PTFE & Others
- Mobile Phase Handling
- Do More with Less

Visit **mtc-usa.com** or call us at **1-732-578-1777**



[www.MTC-USA.com](http://www.MTC-USA.com)