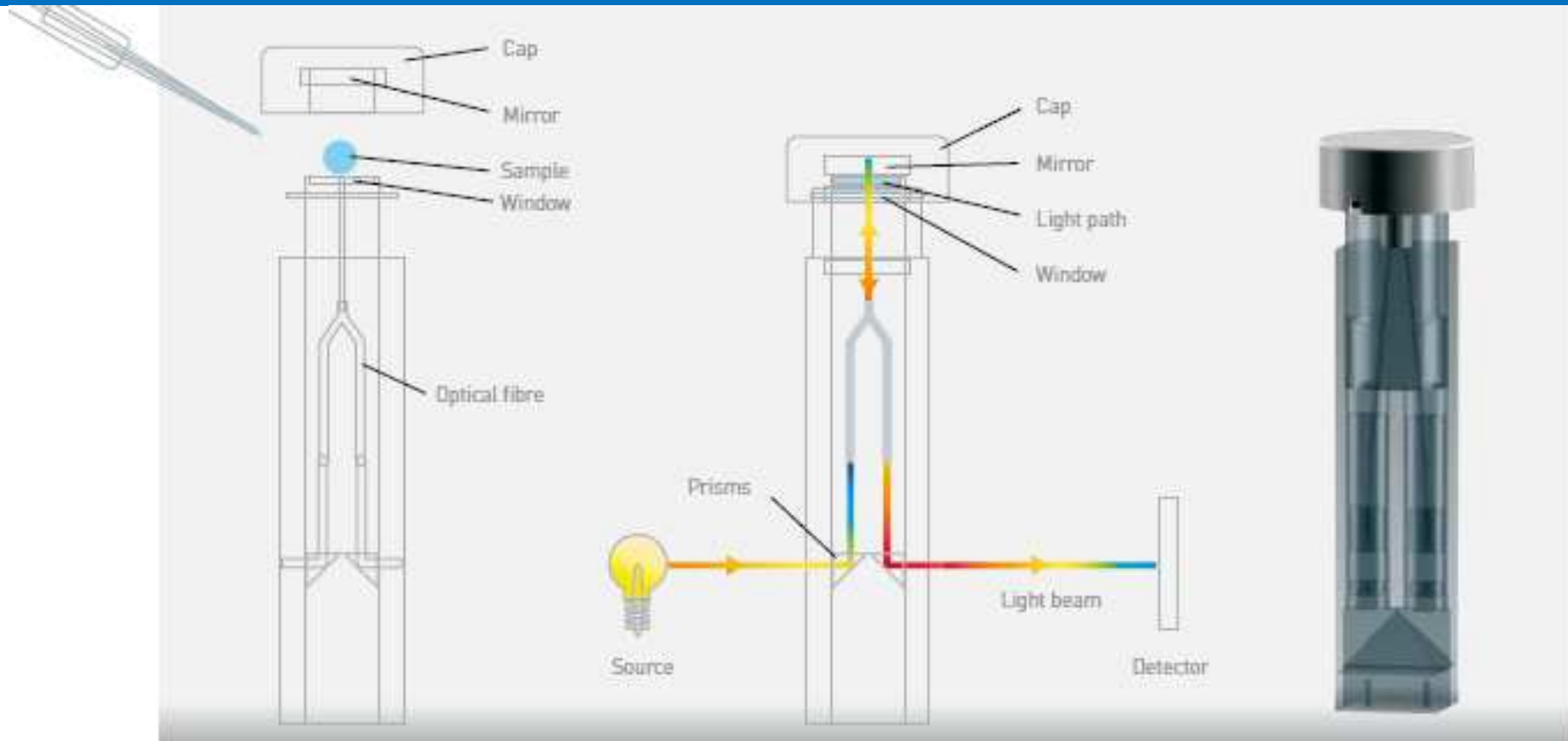


Agilent Microvolume TrayCell



It is a micro volume accessories perfectly working with the Cary 60 for customers with only limited sample volume. Needed volume is 500 nL to 10 μ L.



Expanding Opportunities

New Options for μ -volume UV-Vis measurements

G6871A **Agilent microvolume TrayCell**
(includes a 1 mm pathlength lid)



G6871A#100 Add 0.2 mm pathlength lid



G6871A#300 Add 0.1 mm pathlength lid



G6871A#200 Add 2.0 mm pathlength lid



New Options for μ -volume UV-Vis measurements

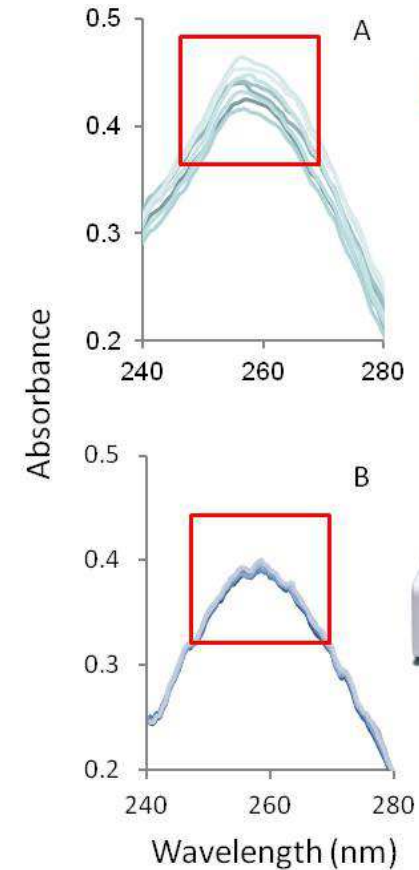
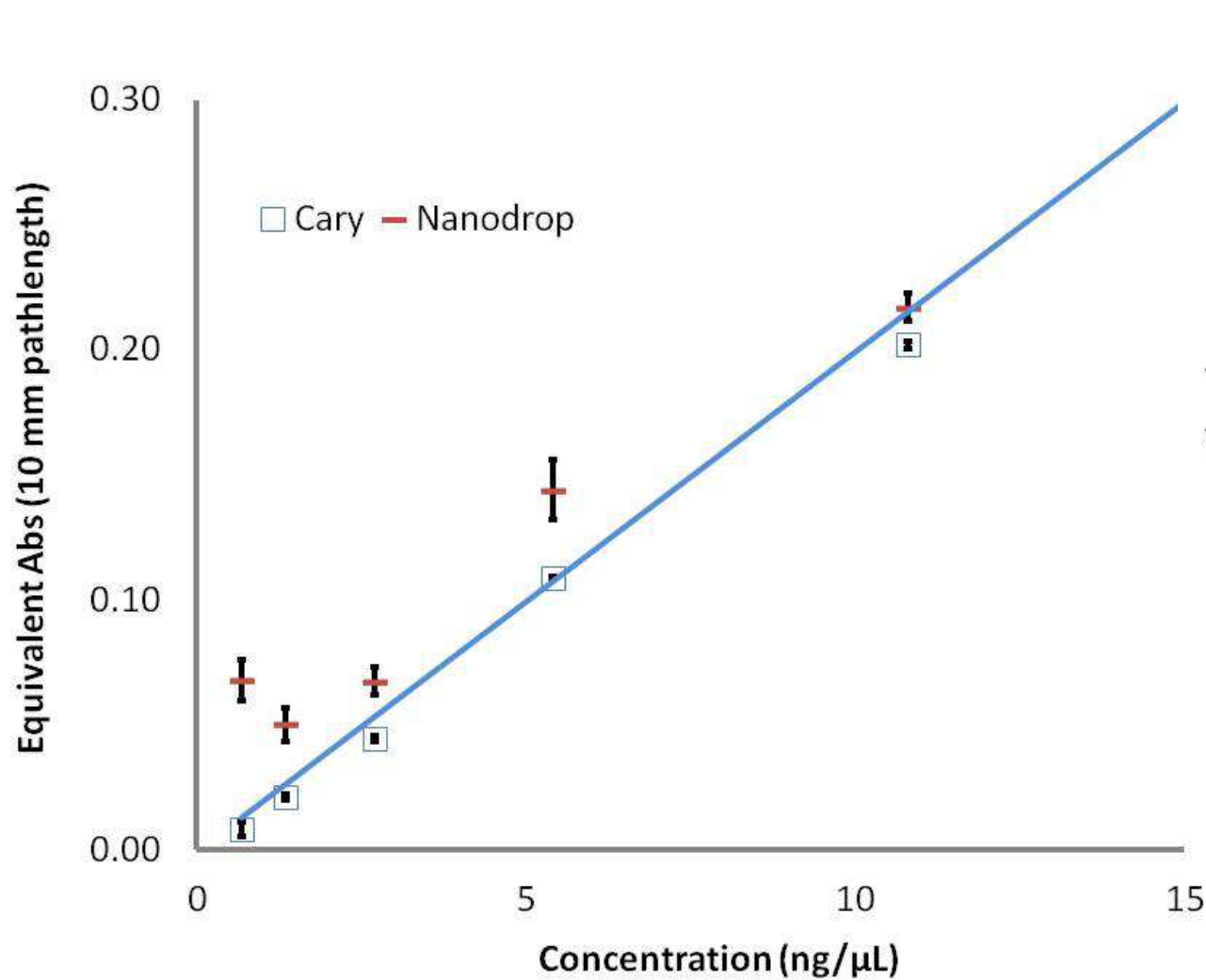
	Factor	2 mm Cap (ng/ μ L)	1 mm Cap (ng/ μ L)	0.2 mm Cap (ng/ μ L)	0.1 mm Cap (ng/ μ L)	Total Detection Range (ng/ μ L)
Factor		5	10	50	100	
dsDNA	50	6-425	2*-850	65-4250	125-8500	6-8500
ssDNA	37	5-315	2-630	50-3145	95-6290	5-6290
RNA	40	5-340	2-680	50-3400	100-6800	5-6800
Oligo	33	4-280	2-560	45-2800	85-5610	4-5610
Sample Volume		6 - 10 μ L	3 - 5 μ L	0.7 - 4 μ L	0.5 - 3 μ L	
Order Number		G6871A #200 NEW!	G6871A	G6871A #100	G6871A #300 NEW!	

*Data obtained using Cary 60 system



Expanding Opportunities

Cary 60 Microvoluem TrayCell vs. NanoDrop



Expanding Opportunities